

**Light thought
with hands
and made with
emotion**

arturo alvarez
emotional light

arturo alvarez

www.arturo-alvarez.com

Handmade in Spain

INDEX

TABLE LAMPS 13 - 15



CV01
13



NE01
13



NE02
14



ON02
14



SH02
14

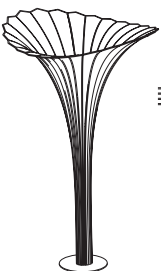


TA02
15



UR01
15

FLOOR LAMPS 16 - 19



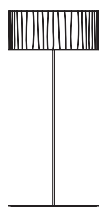
AF03
16



AR03
17



AR03G
17



CV03G
17



GE03
18



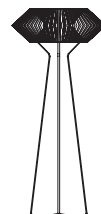
SH03
18



TN03
18

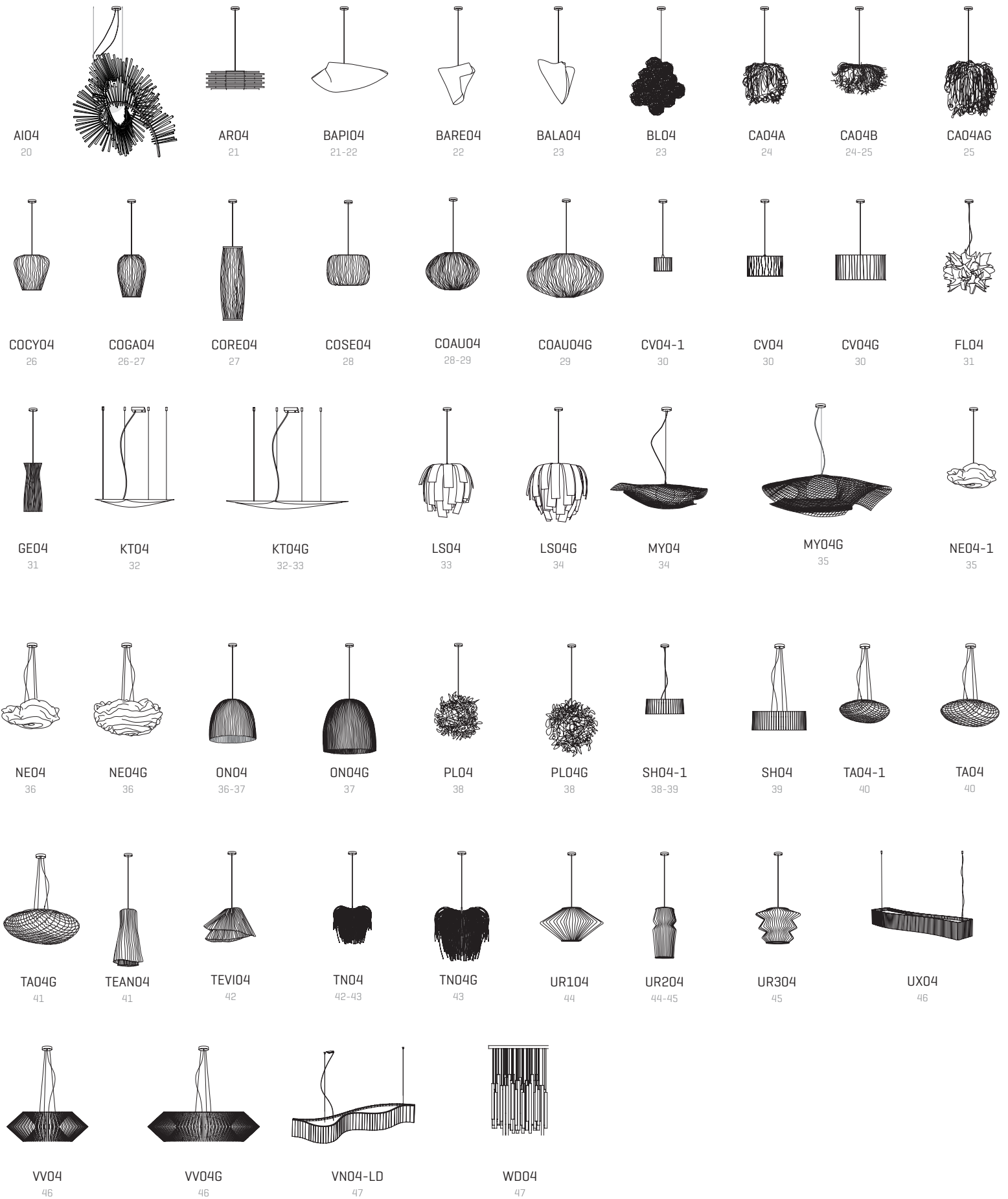


UR03
19

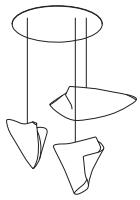


VV03
19

PENDANT LAMPS
20 - 47



COMPOSITIONS
48 - 54



BA04-3
48



CA04A-3
48



CA04AB-3
49



CA04A-4
49



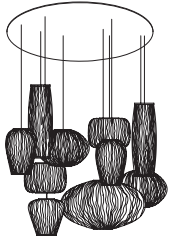
CA04A-6
50



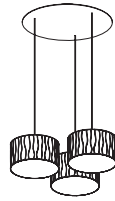
C004-3
50



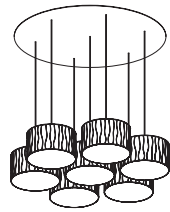
C004-5
50



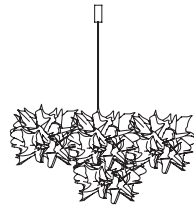
C004-10
50



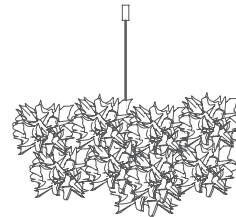
CV04C-3
51



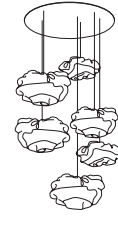
CV04-7
51



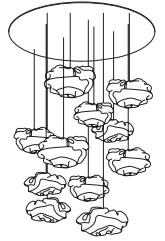
FL04-4
51



FL04-16
52



NE04-6
52



NE04-11
52



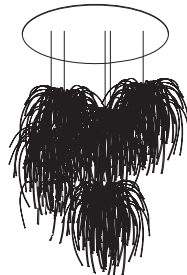
TA04-3
53



TA04-5
53



TA04-10
53



TN04-5
54



UR04-3
54

WALL & CEILING LAMPS
55 - 66



BA06
55



BL06
56



CR06
56



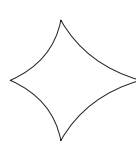
CV06
57



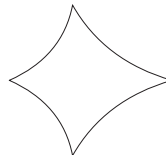
GE06
57



KL06
58



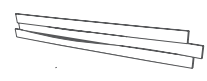
KT06
58-59



KT06G
59



LI06
60



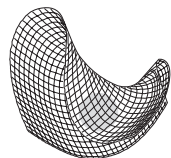
LI06G
60



NE06P
61



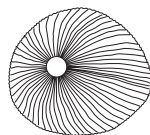
NE06
62



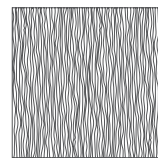
MY06
61



ON06
62-63



ON06G
63



PM06R
63-64



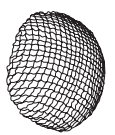
PM06PR
64



TA06
65



TA06P
65-66



TA06G
66

1 Painted stainless steel mesh

The stainless steel mesh is a cold industrial material that Arturo Álvarez, through manual techniques converted into lamps. The physical characteristics of these materials allows through methods developed by Arturo Álvarez, they can be folded, molded and cut resulting in creative freedom designs. The paint finish adds to this resistant and compact material a greater durability and facilitates its maintenance and cleaning.

Colors & codes: White [B], beige [BE], grey [G], taupe [T].

NCS Code: White [S 0500-N], beige [S 3020-Y30R], grey [S 2500-N], taupe [S 3005-Y80R].

Collections: Africa, Ballet, Coral, Cors, Gea, Kala, Luisa, Nevo, Onn, Tati, Tempo. Mytilus collection only available in white.

2 Plywood

Available in yellow, white and wenge the plywood is used in a different way. Showing the internal face of this material, we create designs where the light is stained by the laminate of the wood. Its characteristics make maintenance easy and present a long durability.

Colors & codes: White [B], yellow [AM], wengue [WE].

Collections: Shio, Uxi.

4 Painted stainless steel thread

The stainless steel thread interlaced and embroidered on itself, creates random, light, seemingly fragile volumes, but durable thanks to the sturdiness that paint finish brings.

Colors & codes: White [B].

Collections: Blum, Pili.

3 Cellulose cord

The pressed cellulose cord is a pleasant texture material and has a wide range of colors. This medium flammability component is obtained from pressed cellulose and is molded using its own techniques. Due to its physical characteristics it is not recommended to wet the material for cleaning.

Colors & codes: White [42], grey [43], red [46], brown [47], gold yellow [48], medium brown [49], beige [50], green [51], blue [52].

Collections: Arc, Caos.

5 Galvanized steel mesh

The application of galvanized steel mesh is another example of a different use of the material. The malleability of this material and its hollow light allows it, through painting processes, to become a material with a delicate appearance but of high quality and durability.

Color & code: White [B].

Collections: Fluo.

6 Glass

Our semi-handmade glass presents irregular watermarks that gives personality to this material. This opalescent glass comes in a wide range of bright colors.

Colors & codes: White [02], sand [87], dark amber [89], brown [90], beige [95].

Collections: Curvas, Vento.

9 Ash wood

Ash wood is polyvalent and especially flexible. Its resistance make it a high quality material that, through manual processes, allows curved and durable finishes.

Collection: Aimei.

7 Pressed cellulose

The pressed cellulose, through a suitable refining process, is a highly flexible and moldable material. Resistant and high durable, it comes in a wide range of colors. Due to its physical characteristics it is not recommended to wet the material.

Colors & codes: White [42], grey [43], red [46], brown [47], gold yellow [48], medium brown [49], beige [50], green [51], blue [52].

Collections: Li

10 Polypropylene strips

Through traditional basketmaking techniques, we make voluminous and light designs. This highly flexible, resistant and light material is used in strips that are woven among themselves. With an average degree of flammability, this component is easy to maintain.

Color & code: White [B].

Collections: Aros, Tina.

8 Birch wood

A material of high durability and easy maintenance. The birch wood is characterized by its light color and low contrast, allowing easy manual processing. The light that escapes between the wooden slats turns this material into a warm and elegant wood.

Collection: Woods.

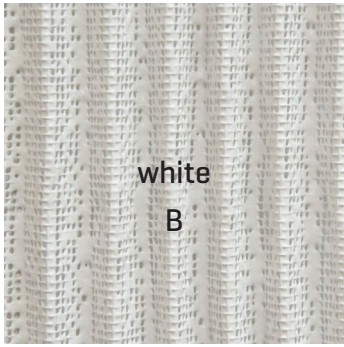
11 Polycarbonate

Through plastic injection technology, this material is consistently made and is available in two colors. The personalized shape of each piece allows the realization of luminaires of large dimensions and easy maintenance

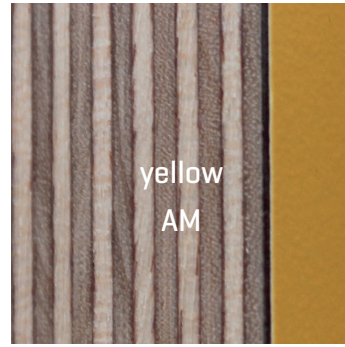
Colors & codes: White [B], black [N].

Collections: V.

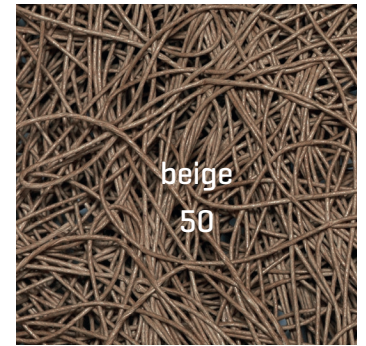
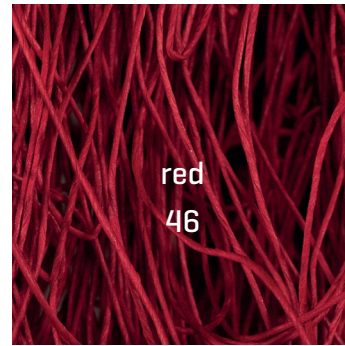
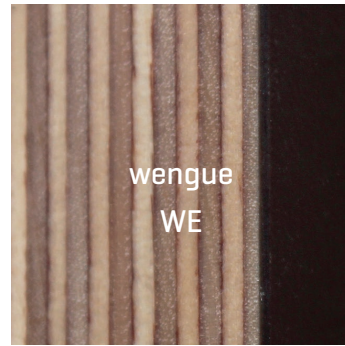
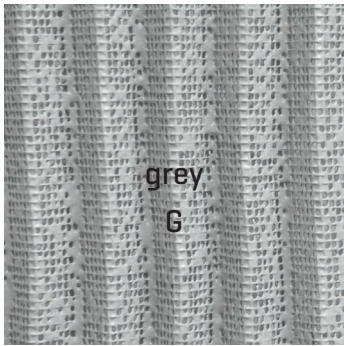
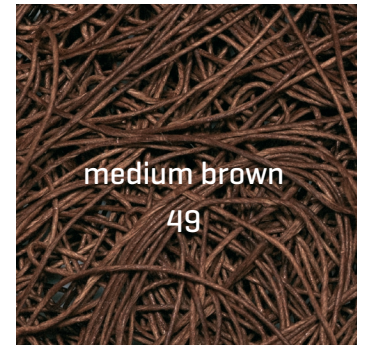
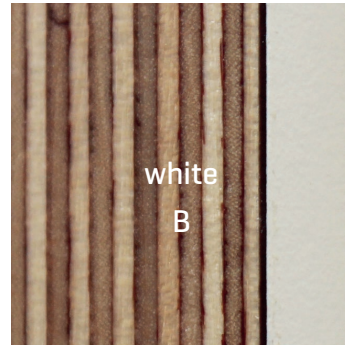
1



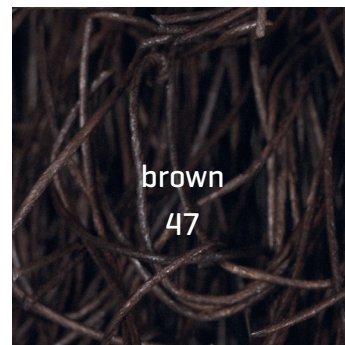
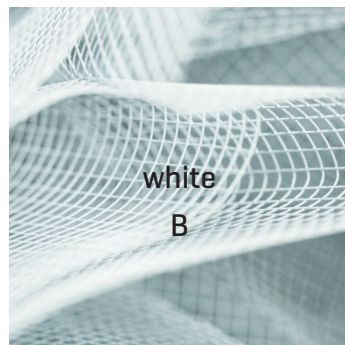
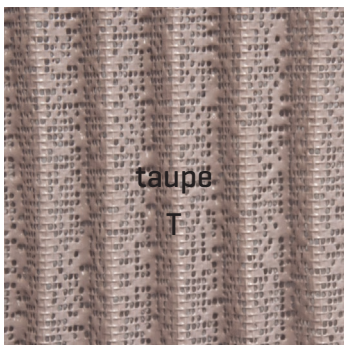
2



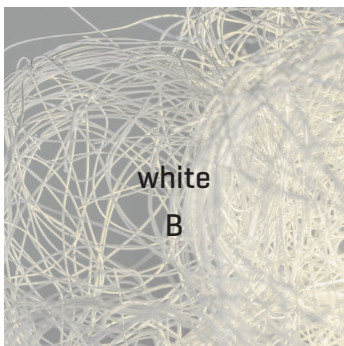
3



5



4

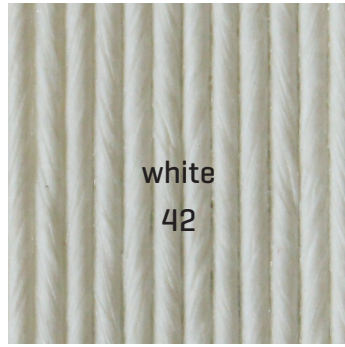


6

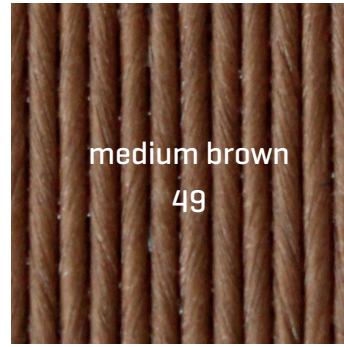


white
02

7



white
42



medium brown
49

8



beige
95

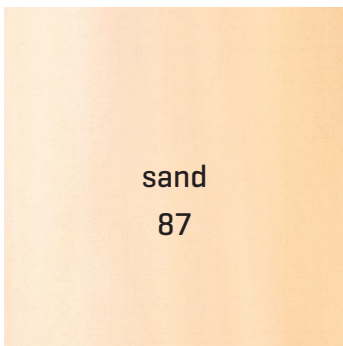
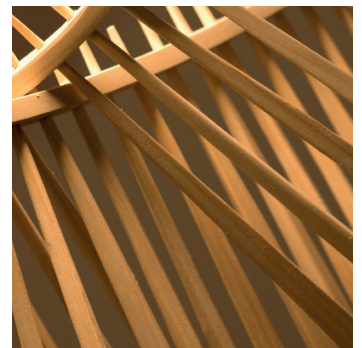


grey
43



beige
50

9



sand
87

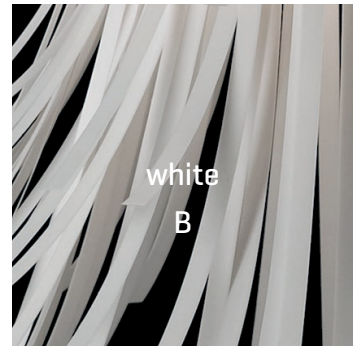


red
46

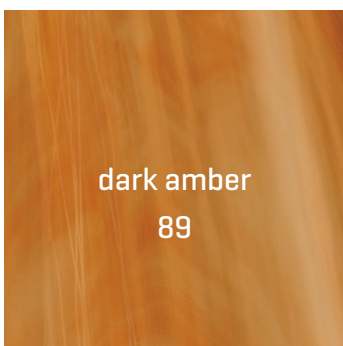


green
51

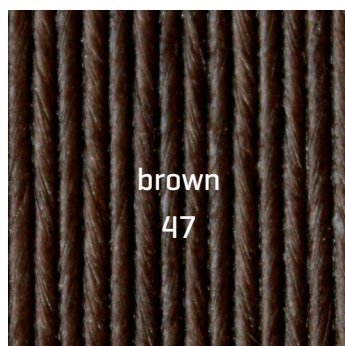
10



white
B



dark amber
89

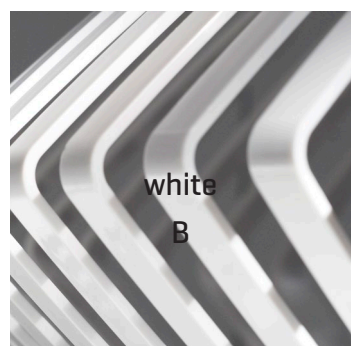


brown
47

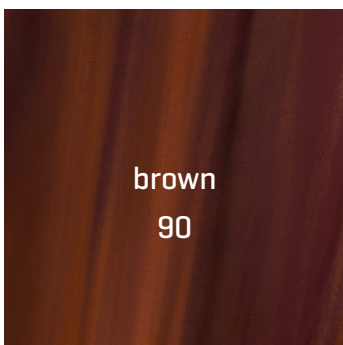


blue
52

11



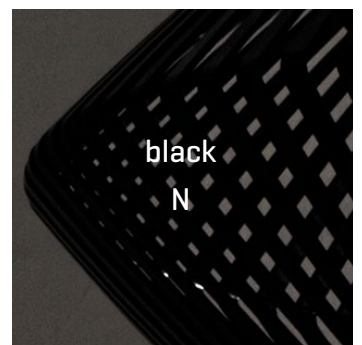
white
B



brown
90



gold yellow
48



black
N

AUTHENTICITY GUARANTEE

All lamps are labelled with an identification code and serial number. This fixture is an exclusive and authentic design of the company arturo alvarez. It is entirely handmade in Spain and passes strict quality controls before its entrance into the market.

SYMBOL INDEX



INTERIOR
DESIGN

Awarded by Interior Design
Magazine, New York



For North America, these items
comply with the UL standard for
luminaires under the UL file of
arturo alvarez



Only for the USA, these items
comply with the UL standard for
luminaires under the UL file of
arturo alvarez



According to Americans with
Disabilities Act



As awarded by the International
Interior Design Association (IIDA)
and Hospitality Design magazine



Available with LED technology



With ground devices



Double insulation and/or reinforced
insulation in every part and without
ground devices



As awarded by the Chicago
Athenaeum Museum of Architecture
and Design



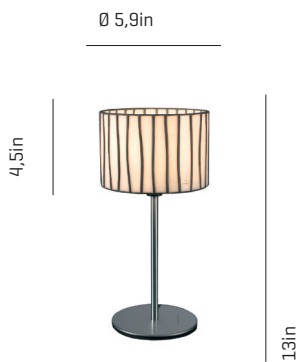
Luminaire to use with tungsten
halogen bulbs with own protection
shield



The device is not suitable for instal-
lation on normally inflammable
surface

TECHNICAL CATALOGUE

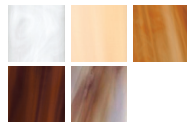
TABLE LAMPS



Curvas ref. CV01

LAMPSHADE
Glass

One color to choose



SUPPORT
Painted steel
and stainless steel

CABLE
Black

RECOMMENDED BULBS
120V - 60Hz

E12 LED - Max. 1x7 W

NET WEIGHT
4,2lb

17,7x9,4x9,8 in

5,7lb



Certifications:



Nevo ref. NE01

LAMPSHADE
Painted stainless steel

One color to choose



SUPPORT
Painted steel
and stainless steel

CABLE
Black

RECOMMENDED BULBS
120V - 60Hz

E12 LED - Max. 2x7 W

NET WEIGHT
3,5lb

14,2x14,2x12,2 in

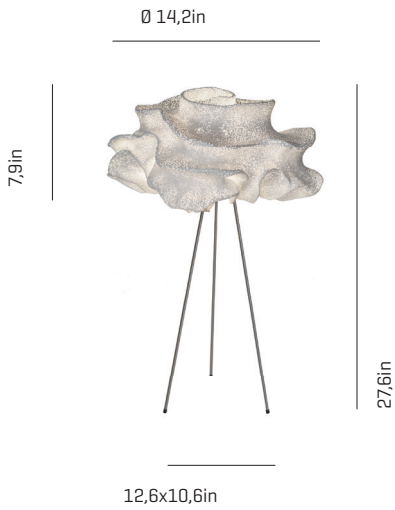
5,5lb



Certifications:



Nevo ref. NE02



LAMPSHADE
Painted stainless steel

SUPPORT
Painted steel
and stainless steel

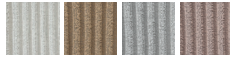
RECOMMENDED BULBS

NET WEIGHT
4,4lb

120V - 60Hz

E12 LED - Max. 2x7 W

One color to choose



CABLE
Black

Steel gloss nickel-plated
and stainless steel



23,6x23,6x13 in

8,8lb



Certifications:



Onn ref. ON02



LAMPSHADE
Painted stainless steel

SUPPORT
Painted steel
and stainless steel

RECOMMENDED BULBS

NET WEIGHT
7,7lb

120V - 60Hz

E12 LED - Max. 2x7 W

One color to choose



CABLE
Black

Steel gloss nickel-plated
and stainless steel



23,6x23,6x13 in

9,9lb



Certifications:



Shio ref. SH02



LAMPSHADE
Plywood

CABLE
Black

RECOMMENDED BULBS

NET WEIGHT
6,6lb

Painted steel

120V - 60Hz

2GX13 - Max. 1x22 W

One color to choose



Top and bottom diffuser



18,5x18,5x24,8 in

11lb



Certifications:





Tati_{ref.} TA02

LAMPSHADE

Painted stainless steel

SUPPORT

Stainless steel

RECOMMENDED BULBS

120V - 60Hz

 E12 LED - Max. 2x7 W

NET WEIGHT

3,5lb

One color to choose



CABLE

Black

Steel gloss nickel-plated and stainless steel



23,6x23,6x13 in

4kg | 8,8lb



Certifications:



Ura_{ref.} UR01

LAMPSHADE

Painted stainless steel

SUPPORT

Stainless steel

RECOMMENDED BULBS

120V - 60Hz

 E26 LED - Max. 1x12 W

NET WEIGHT

2,2lb

One color to choose



CABLE

Black



24x10,2x8,3 in

3,9lb



Certifications:



FLOOR LAMPS

Ø 56,3in



86,6in

Africa ref. AF03

LAMPSHADE
Painted stainless steel

One color to choose



SUPPORT
Stainless steel
and painted steel

CABLE
Black


RECOMMENDED BULBS

120V - 60Hz

 E26 LED - Max. 3x12 W

NET WEIGHT

132,7lb


60,6x60,2x94,5 in

600lb



Certifications:



Transport not included,
price upon request.



Aros ref. AR03

LAMPSHADE
Polypropylene

One color



Painted steel

SUPPORT
Painted stainless steel
and painted steel

Bottom diffuser included

CABLE
Black

RECOMMENDED BULBS

120V - 60Hz

E26 LED - Max. 1x12 W

NET WEIGHT
4kg | 8,8lb

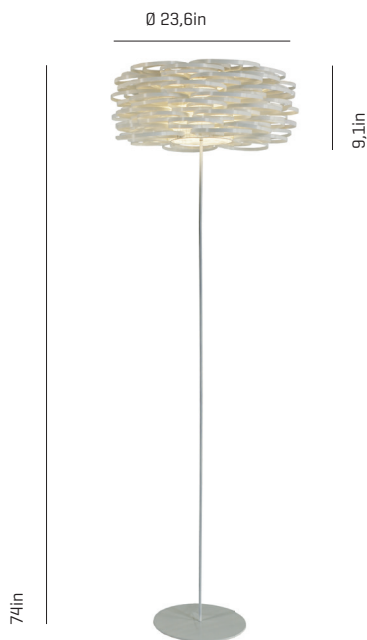


66,9x3,9x3,9 in
23,6x23,6x13 in

7kg | 15,4lb



Certifications:



Aros ref. AR03G

LAMPSHADE
Polypropylene

One color



Painted steel

SUPPORT
Painted stainless steel
and painted steel

Bottom diffuser included

CABLE
Black

RECOMMENDED BULBS

120V - 60Hz

E26 LED - Max. 1x12 W

NET WEIGHT
9,9lb



70,9x3,9x3,9 in
23,6x23,6x13 in

17,9lb



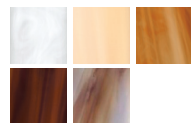
Certifications:



Curvas ref. CV03G

LAMPSHADE
Glass

One color to choose



Top diffuser included

SUPPORT
Painted steel and
stainless steel

Dimmable

CABLE
Black

RECOMMENDED BULBS

ONLY DIMMABLE LED BULBS

120V - 60Hz

E26 LED - Max. 4x12 W

NET WEIGHT
25,6lb



72,8x17,7x9,8 in
23,6x23,6x13 in

33,1lb



Certifications:





Gea ref. GE03

LAMPSHADE
Painted stainless steel

SUPPORT
Painted steel and stainless steel

RECOMMENDED BULBS
ONLY DIMMABLE LED BULBS


NET WEIGHT
32lb

One color to choose



Dimmable

120V - 60Hz
E26 LED - Max. 5x12 W


74,4x17,3x10,6 in

CABLE
Black

41,9lb



Certifications:



7,1x9,4in

70,9in



Shio ref. SH03

LAMPSHADE
Plywood

CABLE
Black

RECOMMENDED BULBS
120V - 60Hz


NET WEIGHT
21,2lb

Painted steel

2GX13 - Max. 1x22 W

One color to choose




61,4x3,9x3,9 in
23,6x23,6x8,7 in

Top and bottom diffuser

26,2lb



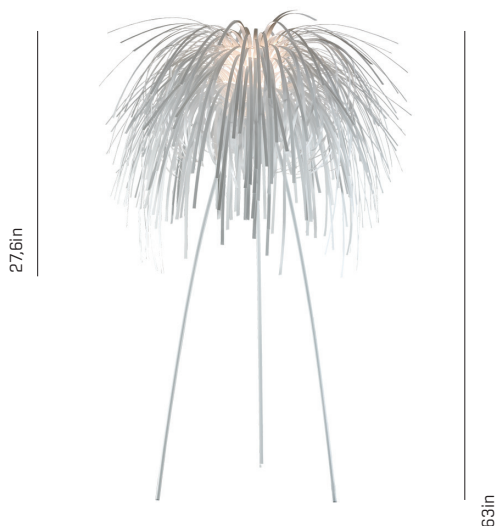
Certifications:



55,1in

20,5in

31,5in



Tina ref. TN03

LAMPSHADE
Polypropylene

SUPPORT
Painted stainless steel and painted steel

RECOMMENDED BULBS
120V - 60Hz

NET WEIGHT
11,5lb


Painted steel

E26 LED - Max. 1x12 W

One color



CABLE
Black


49,2x12,2x12,6 in

14,3lb



Certifications:



27,6in

63in



Ura ref. UR03

LAMPSHADE
Painted stainless steel

SUPPORT
Stainless steel

RECOMMENDED BULBS
ONLY DIMMABLE LED BULBS
120V - 60Hz

NET WEIGHT
16,8lb

One color to choose

Dimmable



E26 LED - Max. 3x12 W

43,3x18,5x23,6 in

CABLE
Black

25,8lb



Certifications:



V ref. VV03

LAMPSHADE
Polycarbonate

SUPPORT
Painted steel

RECOMMENDED BULBS
120V - 60Hz

NET WEIGHT
26,5lb

One color to choose

CABLE
Black



E26 LED - Max. 1x12 W

59,1x19,7x4,7 in
33x33x15 in

Glass diffuser

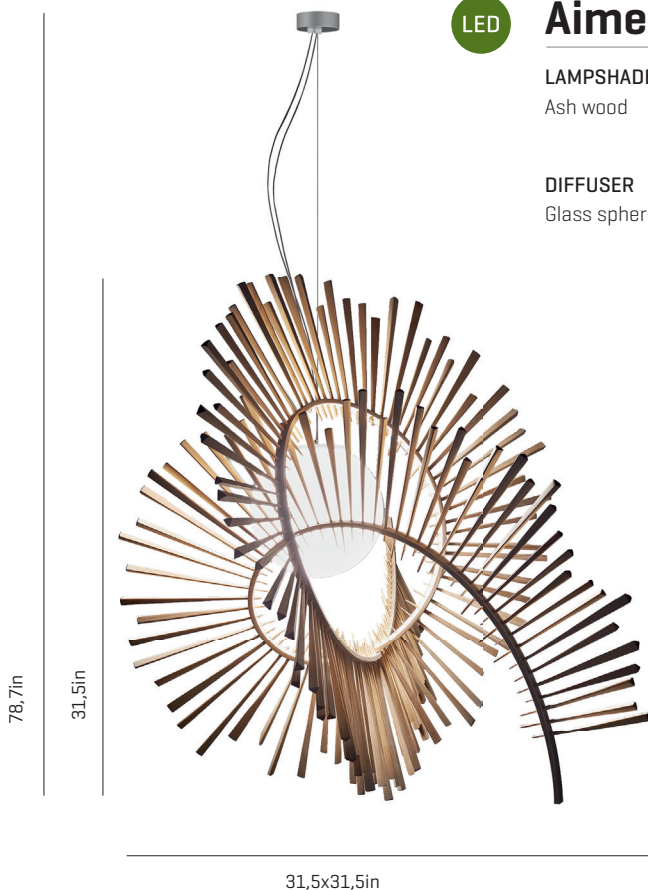
37,5lb



Certifications:



PENDANT LAMPS



Aimei ref. A104

LAMPSHADE
Ash wood

DIFFUSER
Glass sphere

CANOPY
Steel gloss nickel-plated

120V: Ø 4,7in

CABLE
Transparent

LIGHT SOURCE BUILT-IN

120V - 60Hz

8W 3000K 1067lm built-in
upon request 2700K 960lm

Dimming system PHASE CONTROL

NET WEIGHT

21lb



48x32,3x33,5 in

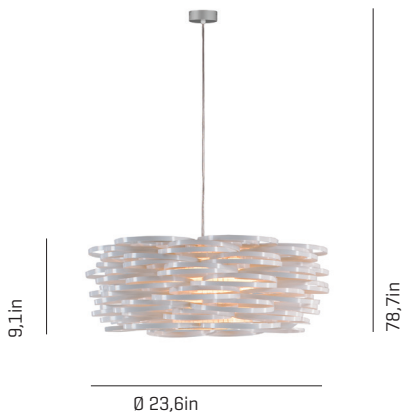
70,5lb



Certifications:



31,5x31,5in



Aros ref. AR04

LAMPSHADE
Polypropylene

Painted steel

One color



CANOPY
Steel gloss nickel-plated

120V: Ø 4,7in

CABLE
Black or transparent

RECOMMENDED BULBS

120V - 60Hz

E26 LED - Max. 1x12 W

NET WEIGHT

2,4lb

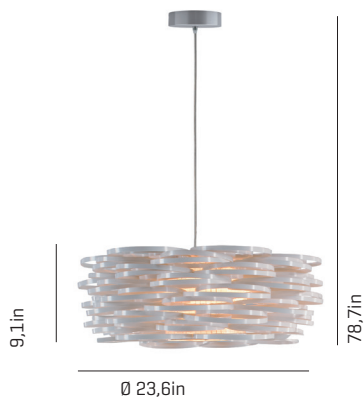


23,6x23,6x13 in

7,9lb



Certifications:



Aros ref. AR04-LD

LAMPSHADE
Polypropylene

Painted steel

One color



Bottom diffuser

CANOPY
Steel gloss nickel-plated

120V: Ø 5,6in

CABLE
Black or transparent

LED / DIMMABLE

LIGHT SOURCE BUILT-IN

100-277V - 60Hz

18,1W 3000K 1776lm built-in
upon request 2700K 1645lm

Dimming system 0-10 V
upon request PHASE CONTROL (only 120V)

NET WEIGHT

4,4lb

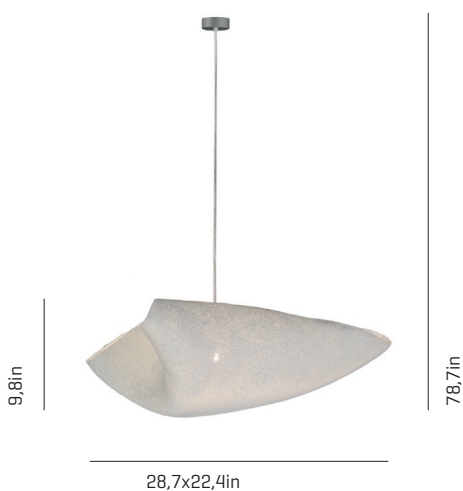


23,6x23,6x13 in

7,4lb



Certifications:



Ballet Plié ref. BAPI04

LAMPSHADE
Painted stainless steel

One color to choose



Stainless steel

CANOPY
Steel gloss nickel-plated

120V: Ø 4,7in

CABLE
Black or transparent

RECOMMENDED BULBS

120V - 60Hz

E26 LED - Max. 1x12 W

NET WEIGHT

2,6lb



23,6x23,6x13 in

7,2lb



Certifications:





LED

Ballet Plié ref. BAPI04-LD

LED / DIMMABLE

LAMPSHADE

Painted stainless steel

One color to choose



Stainless steel

Inside diffuser

CANOPY

Steel gloss nickel-plated

120V: Ø 5,6in

CABLE

Black or transparent

LIGHT SOURCE BUILT-IN

100-277V - 60Hz

● 18,1W 3000K 1776lm built-in
upon request 2700K 1645lm

Dimming system 0-10 V
upon request PHASE CONTROL (only 120V)

NET WEIGHT

4,6lb



23,6x23,6x13 in

9,7lb



Certifications:



Ballet Relevé ref. BARE04

LAMPSHADE

Painted stainless steel

One color to choose



Stainless steel

CANOPY

Steel gloss nickel-plated

120V: Ø 4,7in

CABLE

Black or transparent

RECOMMENDED BULBS

120V - 60Hz

💡 E26 LED - Max. 1x12 W

NET WEIGHT

2,2lb

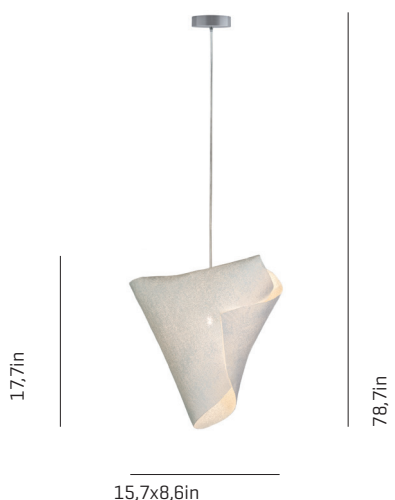


17x17x11,8 in

4,6lb



Certifications:



LED

Ballet Relevé ref. BARE04-LD

LED / DIMMABLE

LAMPSHADE

Painted stainless steel

One color to choose



Stainless steel

Bottom diffuser

CANOPY

Steel gloss nickel-plated

120V: Ø 5,6in

CABLE

Black or transparent

LIGHT SOURCE BUILT-IN

100-277V - 60Hz

● 18,1W 3000K 1776lm built-in
upon request 2700K 1645lm

Dimming system 0-10 V
upon request PHASE CONTROL (only 120V)

NET WEIGHT

3,7lb



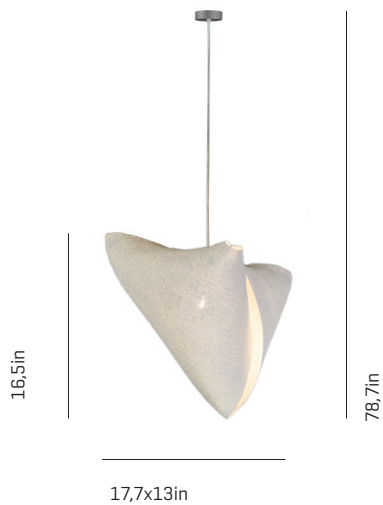
17x17x11,8 in

6,3lb



Certifications:





Ballet Elancé ref. BALA04

LAMPSHADE
Painted stainless steel

CANOPY
Steel gloss nickel-plated

RECOMMENDED BULBS

NET WEIGHT

120V - 60Hz

2,4lb

E26 LED - Max. 1x12 W

One color to choose



120V: Ø 4,7in

CABLE
Black or transparent

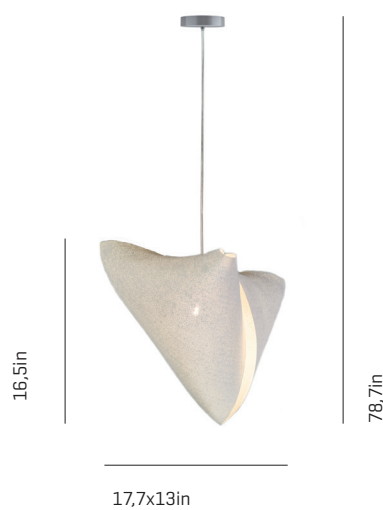
Stainless steel



17,3x17,3x15,7 in
5,3lb



Certifications:



LED Ballet Elancé ref. BALA04-LD LED / DIMMABLE

LAMPSHADE
Painted stainless steel

CANOPY
Steel gloss nickel-plated

LIGHT SOURCE BUILT-IN

NET WEIGHT

100-277V - 60Hz

4,2lb

18,1W 3000K 1776lm built-in
upon request 2700K 1645lm

One color to choose



120V: Ø 5,6in

Dimming system 0-10 V
upon request PHASE CONTROL (only 120V)

CABLE
Black or transparent

Stainless steel

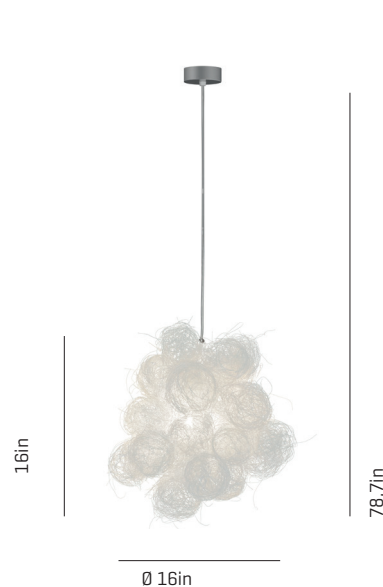


17,3x17,3x15,7 in

7lb



Certifications:



Blum ref. BLO4

LAMPSHADE
Painted stainless steel
thread

CANOPY
Steel gloss nickel-plated

RECOMMENDED BULBS

NET WEIGHT

120V - 60Hz

2,9lb

E26 LED - Max. 1x12 W

One color



CABLE
Black or transparent



17,3x17,3x15,7 in

5,1lb



Certifications:





Caos_{ref.} CA04A

LAMPSHADE

Cord

CANOPY

Steel gloss nickel-plated

RECOMMENDED BULBS

120V - 60Hz

 E26 LED - Max. 1x12 W

NET WEIGHT

2,4lb

One color to choose



CABLE

Black or transparent



17,3x17,3x15,7 in

3,3lb



Certifications:



Stainless steel



Caos_{ref.} CA04A-LD

LED / DIMMABLE



LAMPSHADE


Cord

CANOPY

Steel gloss nickel-plated

LIGHT SOURCE BUILT-IN

100-277V - 60Hz

 18,1W 3000K 1776lm built-in
upon request 2700K 1645lm

Dimming system 0-10 V
upon request PHASE CONTROL (only 120V)

NET WEIGHT

4lb

One color to choose



CABLE

Black or transparent



17,3x17,3x15,7 in

4,6lb



Certifications:



Stainless steel

Bottom diffuser

Caos_{ref.} CA04B



LAMPSHADE

Cord

CANOPY

Steel gloss nickel-plated

RECOMMENDED BULBS

120V - 60Hz

 E26 LED - Max. 1x12 W

NET WEIGHT

2,4lb

One color to choose



CABLE

Black or transparent



14,2x14,2x11,8 in

3,3lb



Certifications:



Stainless steel



Caos_{ref.} CA04B-LD

LED / DIMMABLE

LAMPSHADE

Cord

One color to choose



Stainless steel

Bottom diffuser

CANOPY

Steel gloss nickel-plated

120V: Ø 5,6in

CABLE

Black or transparent

LIGHT SOURCE BUILT-IN

100-277V - 60Hz

● 18,1W 3000K 1776lm built-in
upon request 2700K 1645lm

Dimming system 0-10 V
upon request PHASE CONTROL (only 120V)

NET WEIGHT

3,7lb



14,2x14,2x11,8 in

4,6lb



Certifications:



19,7in



78,7in

Ø 19,7in

Caos_{ref.} CA04AG

LAMPSHADE

Cord

One color to choose



Stainless steel

CANOPY

Steel gloss nickel-plated

120V: Ø 4,7in

CABLE

Black or transparent

RECOMMENDED BULBS

120V - 60Hz

💡 E26 LED - Max. 1x12 W

NET WEIGHT

3,7lb



20x20x20,9 in

8,6lb



Certifications:



Caos_{ref.} CA04AG-LD

LED / DIMMABLE

LAMPSHADE

Cord

One color to choose



Stainless steel

Bottom diffuser

CANOPY

Steel gloss nickel-plated

120V: Ø 5,6in

CABLE

Black or transparent

LIGHT SOURCE BUILT-IN

100-277V - 60Hz

● 18,1W 3000K 1776lm built-in
upon request 2700K 1645lm

Dimming system 0-10 V
upon request PHASE CONTROL (only 120V)

NET WEIGHT

5,1lb



20x20x20,9 in

8,8lb



Certifications:



19,7in



78,7in

Ø 19,7in



Coral Cay ref. COCY04

LAMPSHADE
Painted stainless steel

CANOPY
Steel gloss nickel-plated

RECOMMENDED BULBS

NET WEIGHT
2,4lb

One color to choose



120V: Ø 4,7in

120V - 60Hz

E26 LED - Max. 1x12 W

14,2x14,2x11,8 in
3,4lb

CABLE
Black or transparent

Stainless steel



Certifications:



Coral Cay ref. COCY04-LD

LED / DIMMABLE

LAMPSHADE
Painted stainless steel

CANOPY
Steel gloss nickel-plated

LIGHT SOURCE BUILT-IN

NET WEIGHT
2,9lb

One color to choose



120V: Ø 5,6in

100-277V - 60Hz

18,1W 3000K 1776lm built-in
upon request 2700K 1645lm

14,2x14,2x11,8 in

CABLE
Black or transparent

Stainless steel

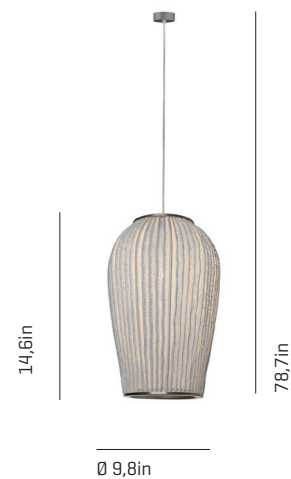
Bottom diffuser

Dimming system 0-10 V
upon request PHASE CONTROL [only 120V]

4,1lb



Certifications:



Coral Galaxea ref. COGA04

LAMPSHADE
Painted stainless steel

CANOPY
Steel gloss nickel-plated

RECOMMENDED BULBS

NET WEIGHT
2,6lb

One color to choose



120V: Ø 4,7in

120V - 60Hz

E26 LED - Max. 1x12 W

14,2x14,2x11,8 in
3,7lb

CABLE
Black or transparent

Stainless steel







Certifications:

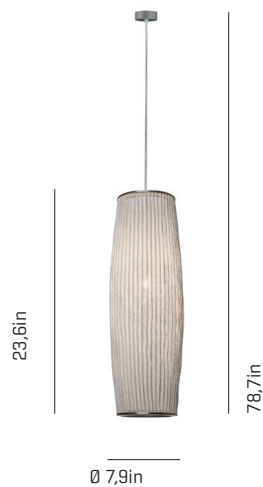









LED

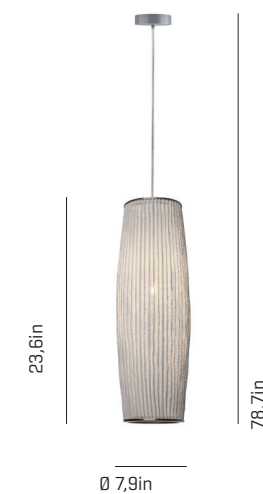
Coral Galaxea ref. COGA04-LD LED / DIMMABLE

LAMPSHADE	CANOPY	LIGHT SOURCE BUILT-IN	NET WEIGHT
Painted stainless steel	Steel gloss nickel-plated	100-277V - 60Hz	4,2lb
One color to choose	120V: Ø 5,6in	● 18,1W 3000K 1776lm built-in upon request 2700K 1645lm	 14,2x14,2x11,8 in
	CABLE Black or transparent	Dimming system 0-10 V upon request PHASE CONTROL [only 120V]	5,9lb
Stainless steel			
Bottom diffuser		Certifications: 	







Coral Reef ref. CORE04

LAMPSHADE	CANOPY	RECOMMENDED BULBS	NET WEIGHT
Painted stainless steel	Steel gloss nickel-plated	120V - 60Hz	3,5lb
One color to choose	120V: Ø 4,7in	 E26 LED - Max. 1x12 W	 24x10,2x8,3 in
	CABLE Black or transparent		4,8lb
Stainless steel			
		Certifications: 	



LED

Coral Reef ref. CORE04-LD LED / DIMMABLE

LAMPSHADE	CANOPY	LIGHT SOURCE BUILT-IN	NET WEIGHT
Painted stainless steel	Steel gloss nickel-plated	100-277V - 60Hz	5,3lb
One color to choose	120V: Ø 5,6in	● 18,1W 3000K 1776lm built-in upon request 2700K 1645lm	 24x10,2x8,3 in
	CABLE Black or transparent	Dimming system 0-10 V upon request PHASE CONTROL [only 120V]	6,4lb
Stainless steel			
Bottom diffuser		Certifications: 	



Coral Sea ref. COSE04

LAMPSHADE

Painted stainless steel

One color to choose



Stainless steel

CANOPY

Steel gloss nickel-plated

120V: Ø 4,7in

CABLE

Black or transparent

RECOMMENDED BULBS

120V - 60Hz

E26 LED - Max. 1x12 W

NET WEIGHT

3,1lb



14,2x14,2x11,8 in

4,4lb



Certifications:



Coral Sea ref. COSE04-LD

LED / DIMMABLE

LAMPSHADE

Painted stainless steel

One color to choose



Stainless steel

Bottom diffuser

CANOPY

Steel gloss nickel-plated

120V: Ø 5,6in

CABLE

Black or transparent

LIGHT SOURCE BUILT-IN

100-277V - 60Hz

18,1W 3000K 1776lm built-in
upon request 2700K 1645lm

Dimming system 0-10 V
upon request PHASE CONTROL (only 120V)

NET WEIGHT

4,2lb



14,2x14,2x11,8 in

5,5lb



Certifications:



Coral Seaurchin ref. COAU04

LAMPSHADE

Painted stainless steel

One color to choose



Stainless steel

CANOPY

Steel gloss nickel-plated

120V: Ø 4,7in

CABLE

Black or transparent

RECOMMENDED BULBS

120V - 60Hz

E26 LED - Max. 1x12 W

NET WEIGHT

3,7lb



17,3x17,3x15,7 in

6,4lb



Certifications:





LED

Coral Seaurchin ref. COAU04-LD LED / DIMMABLE

LAMPSHADE	CANOPY	LIGHT SOURCE BUILT-IN	NET WEIGHT
Painted stainless steel	Steel gloss nickel-plated	100-277V - 60Hz	5,3lb
One color to choose	120V: Ø 5,6in	● 18,1W 3000K 1776lm built-in upon request 2700K 1645lm	17,3x17,3x15,7 in
	CABLE Black or transparent	Dimming system 0-10 V upon request PHASE CONTROL [only 120V]	6,9lb
Stainless steel			
Bottom diffuser			Certifications:



Coral Seaurchin ref. COAU04G

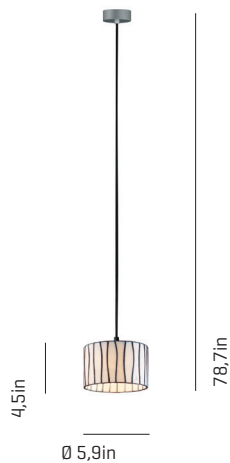
LAMPSHADE	CANOPY	RECOMMENDED BULBS	NET WEIGHT
Painted stainless steel	Steel gloss nickel-plated	120V - 60Hz	9,9lb
One color to choose	120V: Ø 4,7in	E26 LED - Max. 4x12 W	28x28x16,9 in
	CABLE Black or transparent		15,9lb
Stainless steel			
			Certifications:



LED

Coral Seaurchin ref. COAU04G-LD LED / DIMMABLE

LAMPSHADE	CANOPY	LIGHT SOURCE BUILT-IN	NET WEIGHT
Painted stainless steel	Steel gloss nickel-plated	100-277V - 60Hz	9,9lb
One color to choose	120V: Ø 5,6in	● 36,7W 3000K 4086lm built-in upon request 2700K 3938lm	28x28x16,9 in
	CABLE Black or transparent	Dimming system 0-10 V upon request PHASE CONTROL [only 120V]	17,6lb
Stainless steel			
Bottom diffuser			Certifications:

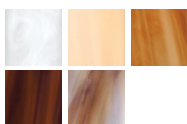


Curvas ref. CV04-1

LAMPSHADE

Glass

One color to choose



CANOPY

Steel gloss nickel-plated

120V: Ø 4,7in

CABLE

Black or transparent

RECOMMENDED BULBS

120V - 60Hz

 E12 LED - Max. 1x7 W

NET WEIGHT

1,5lb

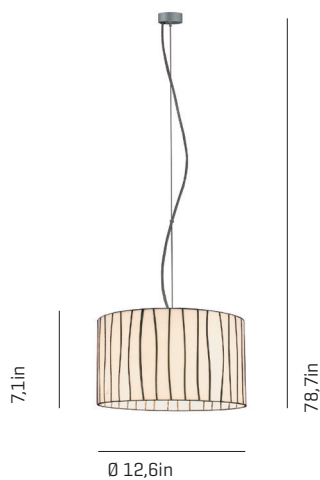


8,3x8,3x8,7 in

3,7lb



Certifications:

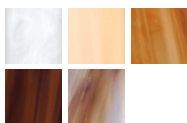


Curvas ref. CV04

LAMPSHADE

Glass

One color to choose



CANOPY

Steel gloss nickel-plated

120V: Ø 4,7in

CABLE

Black or transparent

RECOMMENDED BULBS

120V - 60Hz

 E26 LED - Max. 1x12 W

NET WEIGHT

4,6lb

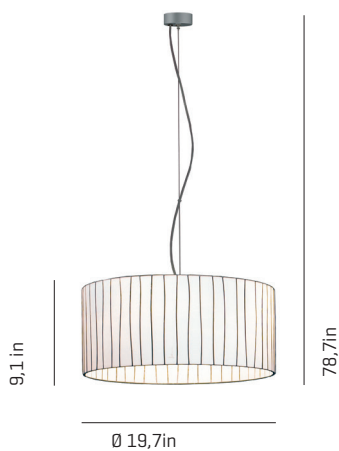


17x17x11,8 in

9,7lb



Certifications:

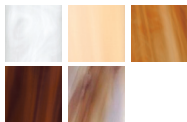


Curvas ref. CV04G

LAMPSHADE

Glass

One color to choose



CANOPY

Steel gloss nickel-plated

120V: Ø 4,7in

CABLE

Black or transparent

RECOMMENDED BULBS

120V - 60Hz

 E26 LED - Max. 4x12 W

NET WEIGHT

12,3lb



23,6x23,6x13 in

34,6lb



Certifications:





Fluo ref. FLO4

LAMPSHADE

Galvanized painted steel

One color



CANOPY

Steel gloss nickel-plated and Stainless steel

120V: Ø 4,7in

CABLE

Black or transparent

RECOMMENDED BULBS

120V - 60Hz

E26 LED - Max. 1x12 W

NET WEIGHT

7,3lb



31,5x29,5x29,5 in

16,7lb



Certifications:



Gea ref. GE04

LAMPSHADE

Painted stainless steel

One color to choose



CANOPY

Steel gloss nickel-plated

120V: Ø 4,7in

CABLE

Black or transparent

RECOMMENDED BULBS

120V - 60Hz

E26 LED - Max. 1x12 W

NET WEIGHT

2,4lb



24x10,2x8,3 in

4,4lb



Certifications:



LED Gea ref. GE04-LD

LAMPSHADE

Painted stainless steel

One color to choose



CANOPY

Steel gloss nickel-plated

120V: Ø 5,6in

CABLE

Black or transparent

Bottom diffuser

LED / DIMMABLE

LIGHT SOURCE BUILT-IN

100-277V - 60Hz

18,1W 3000K 1776lm built-in
upon request 2700K 1645lm

Dimming system 0-10 V
upon request PHASE CONTROL [only 120V]

NET WEIGHT

4,2lb



24x10,2x8,3 in

5,8lb



Certifications:





Kite_{ref.} KT04

LAMPSHADE
SIMETECH®
by arturo alvarez

One color



Painted steel

CANOPY
Stainless steel
120V: 4,7x4,7in

CABLE
Transparent

RECOMMENDED BULBS
120V - 60Hz
2GX13 - Max. 1x55 W

NET WEIGHT
13lb



71x71x13 cm
28x28x5,1 in
7kg | 15,4lb



Certifications:



LED Kite_{ref.} KT04-LD



LAMPSHADE
SIMETECH®
by arturo alvarez

One color



Painted steel

CANOPY
Stainless steel
120V: 5,1x4,3in

CABLE
Transparent

LED / DIMMABLE

LIGHT SOURCE BUILT-IN
100-277V - 60Hz
24W 3000K 3780lm built-in
upon request 2700K 3636lm
Dimming system 0-10 V
upon request PHASE CONTROL (only 120V)

NET WEIGHT
13,2lb



28x28x5,1 in

19,8lb



Certifications:



Kite_{ref.} KT04G



LAMPSHADE
SIMETECH®
by arturo alvarez

One color



Painted steel

CANOPY
Stainless steel
120V: 4,7x4,7in

CABLE
Transparent

RECOMMENDED BULBS
120V - 60Hz
T5 HO Bi-pin - 4x24 W

NET WEIGHT
23lb



40,2x40,2x5,1 in

22,9lb



Certifications:





Kite ref. KT04G-LD

LED / DIMMABLE



LAMPSHADE
SIMETECH®
by arturo alvarez

One color



Painted steel

CANOPY
Stainless steel
120V: 5,1x4,3in

CABLE
Transparent

LIGHT SOURCE BUILT-IN
100-277V - 60Hz
73,6W 3000K 7560lm built-in
upon request 2700K 7272lm
Dimming system 0-10 V
upon request PHASE CONTROL [only 120V]

NET WEIGHT
23,4lb
40,2x40,2x5,1 in
28,7lb



Certifications:



Luisa ref. LS04

RECOMMENDED BULBS

120V - 60Hz
E26 LED - Max. 1x12 W

NET WEIGHT
3,5lb



LAMPSHADE
Painted stainless steel

One color to choose



Stainless steel

CANOPY
Steel gloss nickel-plated
120V: Ø 4,7in

CABLE
Transparent

17,3x17,3x15,7 in
6,6lb



Certifications:



Luisa ref. LS04-LD

LED / DIMMABLE



LAMPSHADE
Painted stainless steel

One color to choose



Stainless steel

Bottom diffuser

CANOPY
Steel gloss nickel-plated
120V: Ø 5,6in

CABLE
Black or transparent

LIGHT SOURCE BUILT-IN
100-277V - 60Hz
18,1W 3000K 1776lm built-in
upon request 2700K 1645lm
Dimming system 0-10 V
upon request PHASE CONTROL [only 120V]

NET WEIGHT
5,3lb
17,3x17,3x15,7 in
7,1lb



Certifications:





Luisa ref. LS04G

LAMPSHADE

Painted stainless steel

One color to choose



Stainless steel

CANOPY

Steel gloss nickel-plated

120V: Ø 4,7in

CABLE

Transparent

RECOMMENDED BULBS

120V - 60Hz

E26 LED - Max. 1x12 W

NET WEIGHT

6lb



20x20x20,9 in

9lb



Certifications:



Luisa ref. LS04G-LD

LAMPSHADE

Painted stainless steel

One color to choose



Stainless steel

Bottom diffuser

CANOPY

Steel gloss nickel-plated

120V: Ø 5,6in

CABLE

Transparent

LED / DIMMABLE

LIGHT SOURCE BUILT-IN

100-277V - 60Hz

18,1W 3000K 1776lm built-in
upon request 2700K 1645lm

Dimming system 0-10 V
upon request PHASE CONTROL (only 120V)

NET WEIGHT

7,3lb

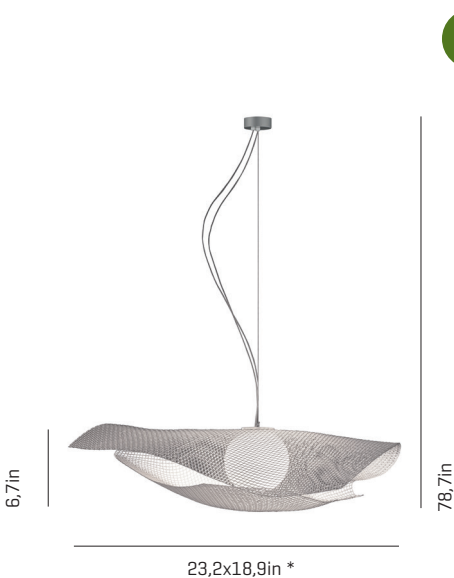


20x20x20,9 in

10,1lb



Certifications:

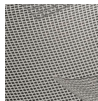


Mytilus ref. MY04

LAMPSHADE

Painted stainless steel

One color



DIFFUSER

Glass sphere

*approximate measurements

CANOPY

Steel gloss nickel-plated

120V: Ø 4,7in

OPTIONAL HANGING SYSTEM

Recessed canopy

CABLE

Transparent

LED / DIMMABLE

LIGHT SOURCE BUILT-IN

120V - 60Hz

8W 3000K 1067lm built-in
upon request 2700K 960lm

Dimming system PHASE CONTROL

NET WEIGHT

6,6lb



23,6x23,6x8,7 in

12,1lb



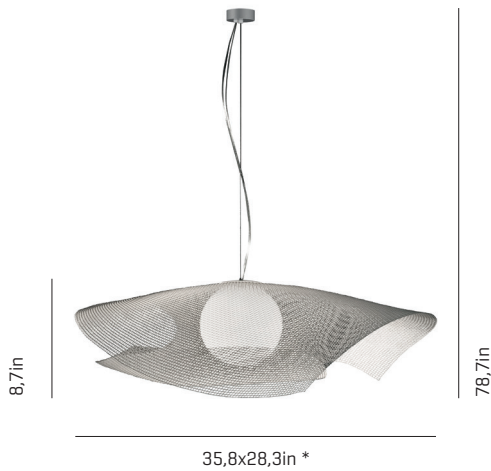
Certifications:





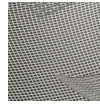
Mytilus ref. MY04G

LED / DIMMABLE



LAMPSHADE
Painted stainless steel

One color



DIFFUSER
Glass sphere

CANOPY
Steel gloss nickel-plated

120V: Ø 4,7in

OPTIONAL HANGING SYSTEM
SUJECIÓN OPCIONAL
Recessed canopy
Florón empotrado

CABLE
Transparent

LIGHT SOURCE BUILT-IN

120V - 60Hz

8W 3000K 1067lm built-in
upon request 2700K 960lm

Dimming system PHASE CONTROL

NET WEIGHT

16,5lb



35,4x39,4x15,7 in

22lb



Certifications:



*approximate measurements

Nevo ref. NE04-1

RECOMMENDED BULBS

120V - 60Hz

E12 LED - Max. 2x7 W

NET WEIGHT

2,6lb



14,2x14,2x12,2 in

5lb



Certifications:



LAMPSHADE
Painted stainless steel

One color to choose



Steel gloss nickel-plated
and Stainless steel

CANOPY
Steel gloss nickel-plated

120V: Ø 4,7in

CABLE
Transparent



Nevo ref. NE04-1-LD

LED / DIMMABLE



LAMPSHADE
Painted stainless steel

One color to choose



Stainless steel

Inside diffuser

CANOPY
Steel gloss nickel-plated

120V: Ø 5,6in

CABLE
Transparent

LIGHT SOURCE BUILT-IN

100-277V - 60Hz

18,1W 3000K 1776lm built-in
upon request 2700K 1645lm

Dimming system 0-10 V
upon request PHASE CONTROL (only 120V)

NET WEIGHT

4,2lb



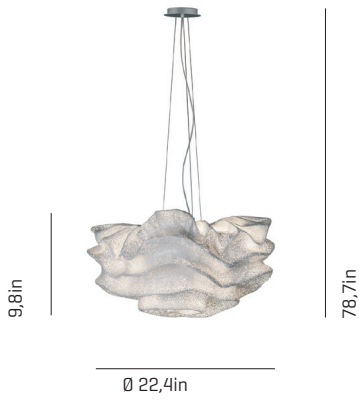
14,2x14,2x12,2 in

5,1lb



Certifications:





Nevo ref. NE04

LAMPSHADE

Painted stainless steel

One color to choose



Steel gloss nickel-plated and Stainless steel

CANOPY

Steel gloss nickel-plated and Stainless steel

120V: Ø 5,9(4,7)in

CABLE

Transparent

RECOMMENDED BULBS

120V - 60Hz

 E26 LED - Max. 3x12 W

NET WEIGHT

6,8lb

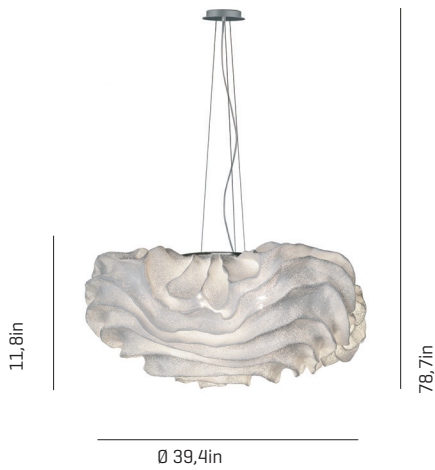


23,6x23,6x13 in

11lb



Certifications:

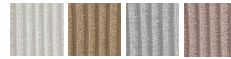


Nevo ref. NE04G

LAMPSHADE

Painted stainless steel

One color to choose



Steel gloss nickel-plated and Stainless steel

CANOPY

Steel gloss nickel-plated and Stainless steel

120V: Ø 5,9(4,7)in

CABLE

Transparent

RECOMMENDED BULBS

120V - 60Hz

 E26 LED - Max. 4x12 W

NET WEIGHT

12,3lb



33x33x15 in

20,7lb



Certifications:



Onn ref. ON04

LAMPSHADE

Painted stainless steel

One color to choose



Stainless steel

CANOPY

Steel gloss nickel-plated

120V: Ø 4,7in

CABLE

Black or transparent

RECOMMENDED BULBS

120V - 60Hz

 E26 LED - Max. 1x12 W

NET WEIGHT

3,1lb



17,3x17,3x15,7 in

6,6lb



Certifications:





Onn ref. ON04-LD

LED / DIMMABLE

LAMPSHADE

Painted stainless steel

CANOPY

Steel gloss nickel-plated

LIGHT SOURCE BUILT-IN

100-277V - 60Hz

● 18,1W 3000K 1776lm built-in
upon request 2700K 1645lm

Dimming system 0-10 V
upon request PHASE CONTROL (only 120V)

NET WEIGHT

4,4lb

One color to choose



120V: Ø 5,6in

CABLE

Black or transparent

Stainless steel

Bottom diffuser



17,3x17,3x15,7 in

8,4lb



Certifications:



Onn ref. ON04G

LAMPSHADE

Painted stainless steel

CANOPY

Steel gloss nickel-plated

RECOMMENDED BULBS

120V - 60Hz

💡 E26 LED - Max. 3x12 W

NET WEIGHT

5,1lb

One color to choose



120V: Ø 4,7in

CABLE

Transparent

Stainless steel



18,5x18,5x24,8 in

10,6lb



Certifications:



Onn ref. ON04G-LD

LED / DIMMABLE

LAMPSHADE

Painted stainless steel

CANOPY

Steel gloss nickel-plated

LIGHT SOURCE BUILT-IN

100-277V - 60Hz

● 18,1W 3000K 1776lm built-in
upon request 2700K 1645lm

Dimming system 0-10 V
upon request PHASE CONTROL (only 120V)

NET WEIGHT

7,5lb

One color to choose



120V: Ø 5,6in

CABLE

Black or transparent

Stainless steel

Bottom diffuser



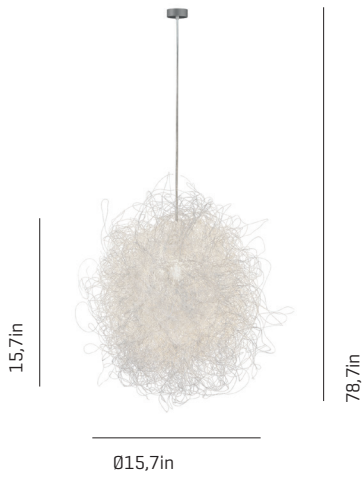
18,5x18,5x24,8 in

12,3lb



Certifications:





Pili ref. PL04

LAMPSHADE
Painted stainless steel thread

One color



CANOPY
Steel gloss nickel-plated
120V: Ø 4,7in

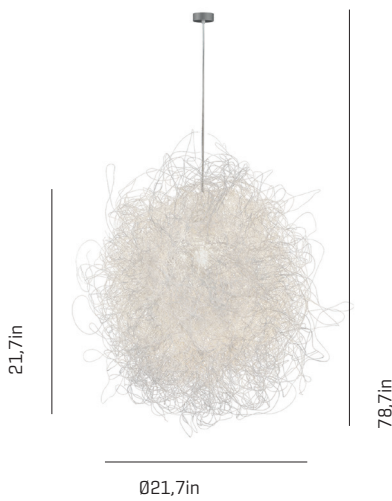
CABLE
Transparent

RECOMMENDED BULBS
120V - 60Hz
E26 LED - Max. 1x12 W

NET WEIGHT
1,8lb
17,3x17,3x15,7 in
5,5lb



Certifications:
cULus



Pili ref. PL04G

LAMPSHADE
Painted stainless steel thread

One color



CANOPY
Steel gloss nickel-plated
120V: Ø 4,7in

CABLE
Transparent

RECOMMENDED BULBS
120V - 60Hz
E26 LED - Max. 1x12 W

NET WEIGHT
2,9lb
20x20x20,9 in
7,5lb



Certifications:
cULus



Shio ref. SH04-1

LAMPSHADE
Plywood
Painted steel

One color to choose



Top and bottom diffuser

CANOPY
Steel gloss nickel-plated and Stainless steel
230V: Ø15(12)cm | 5,9(4,7)in
120V: Ø15(12)cm | 5,9(4,7)in

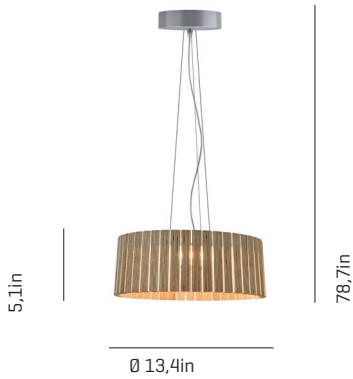
CABLE
Black or transparent

RECOMMENDED BULBS
120V - 60Hz
E26X13 - Max. 1x22 W

NET WEIGHT
7,3lb
17,3x17,3x7,9 in
9,1lb



Certifications:
cULus



Shio ref. SH04-1-LD

LED / DIMMABLE

LAMPSHADE
Plywood

CANOPY
Steel gloss nickel-plated

LIGHT SOURCE BUILT-IN

NET WEIGHT

Painted steel

120V: Ø 5,6in

100-277V - 60Hz

7,3lb

One color to choose



CABLE
Black or transparent

12W 3000K 1683lm built-in
upon request 2700K 1598lm

Dimming system 0-10 V
upon request PHASE CONTROL (only 120V)



17,3x17,3x7,9 in

10,5lb



Certifications:



Top and bottom diffuser

Shio ref. SH04



LAMPSHADE
Plywood

CANOPY
Steel gloss nickel-plated
and Stainless steel

RECOMMENDED BULBS

NET WEIGHT

Painted steel

230V: Ø15(12)cm | 5,9(4,7)in
120V: Ø15(12)cm | 5,9(4,7)in

120V - 60Hz

10,8lb

One color to choose



CABLE
Black or transparent

2GX13 - Max. 1x55 W



23,6x23,6x8,7 in

17,2lb



Certifications:



Top and bottom diffuser



Shio ref. SH04-LD

LED / DIMMABLE



LAMPSHADE
Plywood

CANOPY
Steel gloss nickel-plated

LIGHT SOURCE BUILT-IN

NET WEIGHT

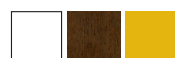
Painted steel

120V: Ø 5,6in

100-277V - 60Hz

13,2lb

One color to choose



CABLE
Black or transparent

24W 3000K 3659lm built-in
upon request 2700K 3550lm

Dimming system 0-10 V
upon request PHASE CONTROL (only 120V)



23,6x23,6x8,7 in

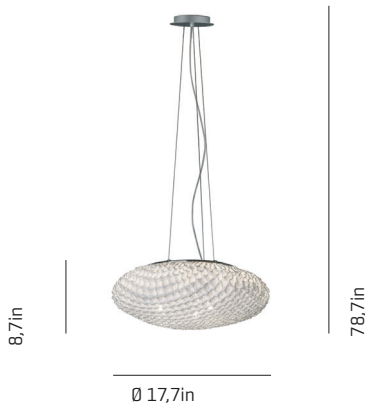
18,5lb



Certifications:



Top and bottom diffuser



Tati ref. TA04-1

LAMPSHADE

Painted stainless steel

One color to choose



Steel gloss nickel-plated and Stainless steel

CANOPY

Steel gloss nickel-plated and Stainless steel

120V: Ø 5,9(4,7)in

CABLE

Black or transparent

RECOMMENDED BULBS

120V - 60Hz

E26 LED - Max. 1x12 W

NET WEIGHT

4,4lb

20,5x18,5x12,2 in

6,6lb



Certifications:



Tati ref. TA04-1-LD

LED / DIMMABLE

LAMPSHADE

Painted stainless steel

One color to choose



Steel gloss nickel-plated and Stainless steel

CANOPY

Steel gloss nickel-plated

120V: Ø 5,6in

CABLE

Black or transparent

LIGHT SOURCE BUILT-IN

100-277V - 60Hz

18,1W 3000K 1776lm built-in
upon request 2700K 1645lm

Dimming system 0-10 V
upon request PHASE CONTROL [only 120V]

NET WEIGHT

4,8lb

20,5x18,5x12,2 in

7,1lb



Certifications:



Tati ref. TA04

LAMPSHADE

Painted stainless steel

One color to choose



Steel gloss nickel-plated and Stainless steel

CANOPY

Steel gloss nickel-plated and Stainless steel

120V: Ø 5,9(4,7)in

CABLE

Black or transparent

RECOMMENDED BULBS

120V - 60Hz

E26 LED - Max. 3x12 W

NET WEIGHT

6,8lb

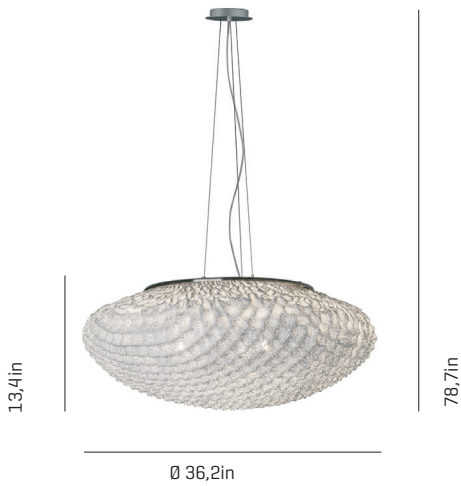
23,6x23,6x13 in

8,8lb



Certifications:





Tati ref. TA04G

LAMPSHADE

Painted stainless steel

One color to choose



Steel gloss nickel-plated and Stainless steel

CANOPY

Steel gloss nickel-plated and Stainless steel

120V: Ø 5,9(4,7) in

CABLE

Black or transparent

RECOMMENDED BULBS

120V - 60Hz

E26 LED - Max. 4x12 W

NET WEIGHT

9,5lb



33,1x33,1x15 in

19,8lb



Certifications:



Tempo Andante ref. TEAN04

LAMPSHADE

Painted stainless steel

One color to choose



CANOPY

Steel gloss nickel-plated

120V: Ø 4,7 in

CABLE

Black or transparent

RECOMMENDED BULBS

120V - 60Hz

E26 LED - Max. 1x12 W

NET WEIGHT

3,5lb



24x10,2x8,3 in

4lb



Certifications:



Tempo Andante ref. TEAN04-LD LED / DIMMABLE

LAMPSHADE

Painted stainless steel

One color to choose



Bottom diffuser

CANOPY

Steel gloss nickel-plated

120V: Ø 5,6 in

CABLE

Black or transparent

LIGHT SOURCE BUILT-IN

100-277V - 60Hz

18,1W 3000K 1776lm built-in
upon request 2700K 1645lm

Dimming system 0-10 V
upon request PHASE CONTROL [only 120V]

NET WEIGHT

4,6lb



24x10,2x8,3 in

5,5lb



Certifications:



Tempo Vivace ref. TEV104



LAMPSHADE
Painted stainless steel

CANOPY
Steel gloss nickel-plated

RECOMMENDED BULBS


NET WEIGHT
3,5lb

One color to choose



120V: Ø 4,7in

120V - 60Hz
E26 LED - Max. 1x12 W


17x17x15,7 in
4,8lb

CABLE
Black or transparent



Certifications:



Tempo Vivace ref. TEV104-LD LED / DIMMABLE



LAMPSHADE
Painted stainless steel

CANOPY
Steel gloss nickel-plated

LIGHT SOURCE BUILT-IN


NET WEIGHT
4,6lb

One color to choose



120V: Ø 5,6in

100-277V - 60Hz
18,1W 3000K 1776lm built-in
upon request 2700K 1645lm
Dimming system 0-10 V
upon request PHASE CONTROL (only 120V)


17x17x15,7 in
6,6lb

CABLE
Black or transparent

Bottom diffuser



Certifications:



Tina ref. TN04



LAMPSHADE
Polypropylene

CANOPY
Steel gloss nickel-plated

RECOMMENDED BULBS

NET WEIGHT
4,6lb

Painted steel


120V: Ø 4,7in

120V - 60Hz
E26 LED - Max. 1x12 W

One color



CABLE
Black or transparent


43,3x12,2x9,8 in
8,3lb



Certifications:





Tina_{ref.} TN04-LD

LED/DIMMABLE

LAMPSHADE
Polypropylene

CANOPY
Steel gloss nickel-plated

LIGHT SOURCE BUILT-IN

NET WEIGHT

Painted steel

120V: Ø 5,6in

100-277V - 60Hz

7,1lb

One color

CABLE
Black or transparent

● 18,1W 3000K 1776lm built-in
upon request 2700K 1645lm

Dimming system 0-10 V
upon request PHASE CONTROL [only 120V]



43,3x12,2x9,8 in

Bottom diffuser

9,7lb



Certifications:



Tina_{ref.} TN04G

RECOMMENDED BULBS

NET WEIGHT

LAMPSHADE
Polypropylene

CANOPY
Steel gloss nickel-plated

120V - 60Hz

6,6lb

Painted steel

120V: Ø 4,7in

● E26 LED - Max. 1x12 W

One color

CABLE
Black or transparent



43,3x12,2x9,8 in

11,2lb



Certifications:



Tina_{ref.} TN04G-LD

LED / DIMMABLE

LAMPSHADE
Polypropylene

CANOPY
Steel gloss nickel-plated

LIGHT SOURCE BUILT-IN

NET WEIGHT

Painted steel

120V: Ø 5,6in

100-277V - 60Hz

8,8lb

One color

CABLE
Black or transparent

● 18,1W 3000K 1776lm built-in
upon request 2700K 1645lm

Dimming system 0-10 V
upon request PHASE CONTROL [only 120V]



43,3x12,2x9,8 in

12,6lb



Certifications:





Ura 1 ref. UR104

LAMPSHADE

Painted stainless steel

One color to choose



Stainless steel

CANOPY

Steel gloss nickel-plated

120V: Ø 4,7in

CABLE

Black or transparent

RECOMMENDED BULBS

120V - 60Hz

E26 LED - Max. 1x12 W

NET WEIGHT

4lb



23,6x23,6x13 in

4,2kg | 9,2lb



Certifications:



Ura 1 ref. UR104-LD

LAMPSHADE

Painted stainless steel

One color to choose



Stainless steel

Bottom diffuser

CANOPY

Steel gloss nickel-plated

120V: Ø 5,6in

CABLE

Black or transparent

LED / DIMMABLE

LIGHT SOURCE BUILT-IN

100-277V - 60Hz

18,1W 3000K 1776lm built-in
upon request 2700K 1645lm

Dimming system 0-10 V
upon request PHASE CONTROL (only 120V)

NET WEIGHT

5,1lb



23,6x23,6x13 in

10,4lb



Certifications:



Ura 2 ref. UR204

LAMPSHADE

Painted stainless steel

One color to choose



Stainless steel

CANOPY

Steel gloss nickel-plated

120V: Ø 4,7in

CABLE

Black or transparent

RECOMMENDED BULBS

120V - 60Hz

E26 LED - Max. 1x12 W

NET WEIGHT

2,4lb



18,1x9,4x9,8 in

3,5lb



Certifications:





LED

Ura 2 ref. UR204-LD

LED / DIMMABLE

LAMPSHADE

Painted stainless steel

CANOPY

Steel gloss nickel-plated

LIGHT SOURCE BUILT-IN

100-277V - 60Hz

NET WEIGHT

3,7lb

One color to choose



120V: Ø 5,6in

● 18,1W 3000K 1776lm built-in
upon request 2700K 1645lm



18,1x9,4x9,8 in

Dimming system 0-10 V
upon request PHASE CONTROL [only 120V]

Stainless steel

CABLE

Black or transparent

4,6lb

Bottom diffuser



Certifications:



Ura 3 ref. UR304

RECOMMENDED BULBS

120V - 60Hz

NET WEIGHT

2,9lb

LAMPSHADE

Painted stainless steel

CANOPY

Steel gloss nickel-plated

● E26 LED - Max. 1x12 W



14,2x14,2x12,2 in

One color to choose



120V: Ø 4,7in

CABLE

Transparent

3,5lb

Stainless steel



Certifications:



LED

Ura 3 ref. UR304-LD

LED / DIMMABLE

LAMPSHADE

Painted stainless steel

CANOPY

Steel gloss nickel-plated

LIGHT SOURCE BUILT-IN

100-277V - 60Hz

NET WEIGHT

4lb

One color to choose



120V: Ø 5,6in

● 18,1W 3000K 1776lm built-in
upon request 2700K 1645lm



14,2x14,2x12,2 in

Dimming system 0-10 V
upon request PHASE CONTROL [only 120V]

Stainless steel

CABLE

Black or transparent

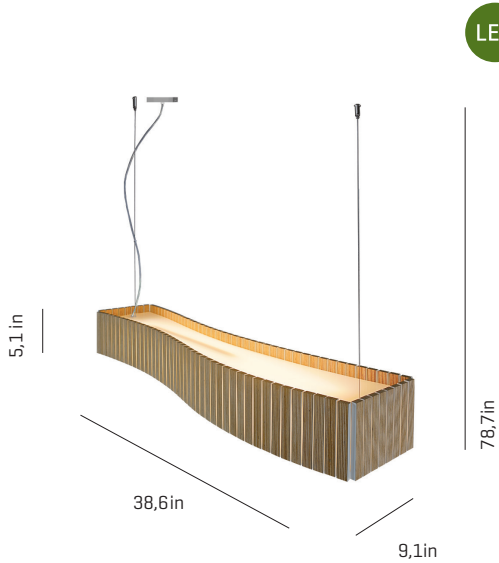
4,4lb

Bottom diffuser



Certifications:





LED Uxi ref. UX04-LD

LAMPSHADE
Plywood

One color to choose



Top and bottom diffuser

CANOPY
Stainless steel

120V: 5,1x4,3in

CABLE
Black or transparent

LIGHT SOURCE BUILT-IN

100-277V - 60Hz

24W 3000K 3659lm built-in
upon request 2700K 3550lm

Dimming system 0-10 V
upon request PHASE CONTROL [only 120V]

NET WEIGHT

12,6lb

43,3x12,2x9,8 in

17lb



Certifications:



V ref. VV04

LAMPSHADE
Polycarbonate

One color to choose



Glass diffuser

CANOPY
Steel glass nickel-plated
and Stainless steel

120V: Ø 5,9(4,7)in

CABLE
Black or transparent

RECOMMENDED BULBS

120V - 60Hz

E26 LED - Max. 1x12 W

NET WEIGHT

12lb

33x33x15 in

21,2lb



Certifications:



V ref. VV04G

LAMPSHADE
Polycarbonate

One color to choose



Glass diffuser

CANOPY
Steel glass nickel-plated
and Stainless steel

120V: Ø 5,9(4,7)in

CABLE
Black or transparent

RECOMMENDED BULBS

120V - 60Hz

E26 LED - Max. 4x12 W

NET WEIGHT

26,5lb

42,5x42,5x13 in

22lb

23,6x23,6x13 in

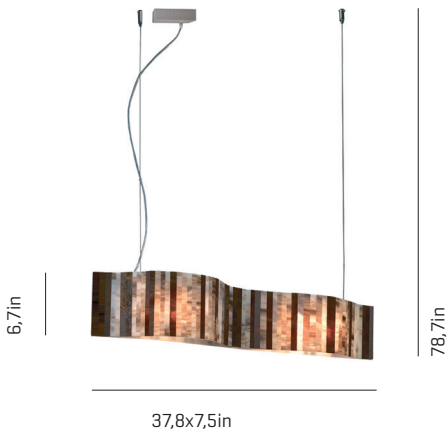
23,6x23,6x8,7 in

26,4lb



Certifications:





LED

Vento ref. VN04-LD

LED / DIMMABLE

LAMPSHADE
Glass

CANOPY
Stainless steel

LIGHT SOURCE BUILT-IN

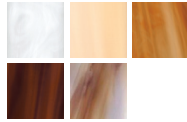
NET WEIGHT

120V: 5,1x4,3in

100-277V - 60Hz

12,3lb

One color to choose



16W 3000K 2.125lm built-in
upon request 2700K

Dimming system 0-10 V
upon request PHASE CONTROL (only 120V)



49,2x12,2x12,6 in

CABLE
Black or transparent

21,6lb

Color combination

Brown



Certifications:



Bottom diffuser



Woods ref. WD04

LAMPSHADE
Birch

CANOPY
Painted steel

RECOMMENDED BULBS

NET WEIGHT

120V: Ø 23,6in

120V - 60Hz

31,5lb



E26 LED - Max. 1x12 W



23,6x23,6x13 in

CABLE
Transparent

Glass diffuser

37,7lb

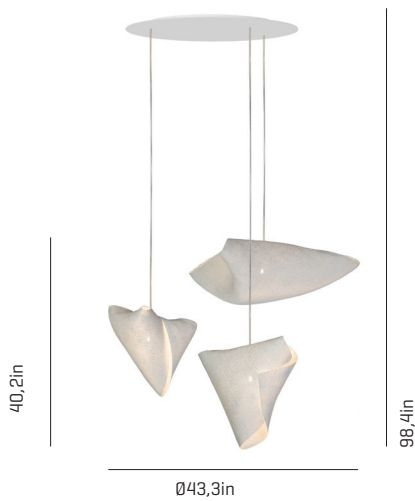


*Height is not adjustable on site

Certifications:



COMPOSITIONS



Ballet ref. BA04-3

LAMPSHADE
Painted stainless steel

CANOPY
DIBOND®
120V: Ø 23,6in

RECOMMENDED BULBS

NET WEIGHT

120V - 60Hz

12,6lb

 E26 LED - Max. 3x12 W

One color to choose



Color combinations upon request

CABLE
Black or transparent



23,6x31,5x45,7 in

30,2lb

Stainless steel



Certifications:



refs. 1xBAPI04, 1xBARE04, 1xBALA04



Caos ref. CA04A-3

LAMPSHADE
Cord

CANOPY
DIBOND®
120V: Ø 23,6in

RECOMMENDED BULBS

NET WEIGHT

120V - 60Hz

14,6lb

 E26 LED - Max. 3x12 W

One color to choose



Color combinations upon request

CABLE
Transparent



23,6x31,5x36,2 in

23,1lb

Stainless steel



Certifications:



refs. 3xCA04A

Caos ref. CA04AB-3



29,5x31,5in

98,4in

LAMPSHADE

Cord

One color to choose



Color combinations upon request

Stainless steel

CANOPY

DIBOND®

120V: Ø 23,6in

CABLE

Transparent

RECOMMENDED BULBS

120V - 60Hz

 E26 LED - Max. 3x12 W

NET WEIGHT

14,6lb



23,6x31,5x36,2 in

23,1lb



Certifications:



refs. 1xCA04A, 2xCA04B
*picture colors: 48-49-51

Caos ref. CA04A-4



40,6x35,4in

98,4in

LAMPSHADE

Cord

One color to choose



Color combinations upon request

Stainless steel

CANOPY

DIBOND®

120V: Ø 39,4in

CABLE

Transparent

RECOMMENDED BULBS

120V - 60Hz

 E26 LED - Max. 4x12 W

NET WEIGHT

17,2lb



31,5x47,2x45,3 in

39,6lb



Certifications:



refs. 3xCA04A, 1xCA04AG

Caos ref. CA04A-6



45,3x45,3in

98,4in

LAMPSHADE

Cord

One color to choose



Color combinations upon request

Stainless steel

CANOPY

DIBOND®

120V: Ø 39,4in

CABLE

Transparent

RECOMMENDED BULBS

120V - 60Hz

 E26 LED - Max. 6x12 W

NET WEIGHT

30,9lb



31,5x47,2x45,3 in

44lb



Certifications:



refs. 6xCA04A
*picture colors: 42-46-52



Coral ref. C004-3

LAMPSHADE
Painted stainless steel

CANOPY
DIBOND®
120V: Ø 23,6in

RECOMMENDED BULBS
120V - 60Hz
E26 LED - Max. 3x12 W

NET WEIGHT
15,2lb

One color to choose



Color combinations upon request

CABLE
Black or transparent


23,6x31,5x33,5 in
26,5lb

Stainless steel



Certifications:



refs. 1xC0AU04, 1xCOSE04, 1xCOGA04



Coral ref. C004-5

LAMPSHADE
Painted stainless steel

CANOPY
DIBOND®
120V: Ø 23,6in

RECOMMENDED BULBS
120V - 60Hz
E26 LED - Max. 5x12 W

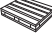
NET WEIGHT
21,2lb

One color to choose



Color combinations upon request

CABLE
Black or transparent


23,6x31,5x43,3 in
38,6lb

Stainless steel



Certifications:



refs. 1xC0AU04, 1xCOCY04,
1xCOSE04, 1xCOGA04, 1xCORE04



Coral ref. C004-10

LAMPSHADE
Painted stainless steel

CANOPY
DIBOND®
120V: Ø 47,2in

RECOMMENDED BULBS
120V - 60Hz
E26 LED - Max. 10x12 W

NET WEIGHT
77,8lb

One color to choose



Color combinations upon request

CABLE
Transparent

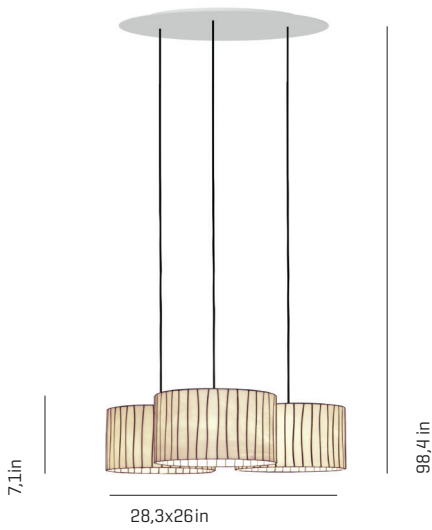

31,5x47,2x57,1 in
118,4lb

refs. 2xC0AU04, 1xCOCY04,
2xCOSE04, 2xCOGA04,
2xCORE04, 1xC0AU04G



Certifications:

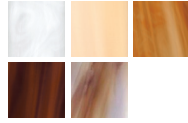




Curvas ref. CVO4C-3

LAMP SHADE
Glass

One color to choose



Bottom diffuser

refs. 3xCV04
*picture color: white

CANOPY
DIBOND®
120V: Ø 23,6in

CABLE
Black or transparent

RECOMMENDED BULBS

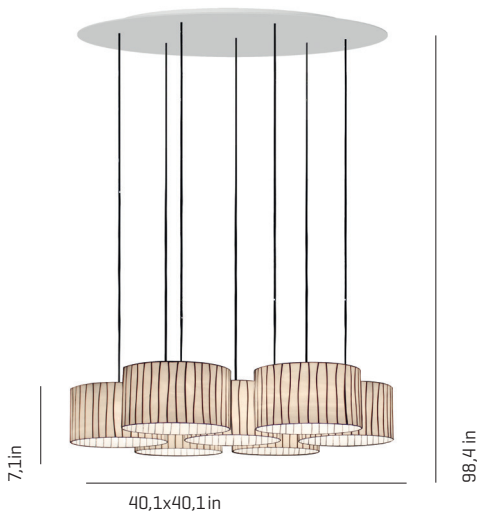
120V - 60Hz
E26 LED - Max. 3x12 W

NET WEIGHT

17,6lb
23,6x31,5x37,4 in
35lb



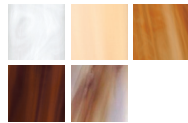
Certifications:



Curvas ref. CV04-7

LAMP SHADE
Glass

One color to choose



Bottom diffuser

refs. 7xCV04
*picture color: white

CANOPY
DIBOND®
120V: Ø 39,4in

CABLE
Black or transparent

RECOMMENDED BULBS

120V - 60Hz
E26 LED - Max. 7x12 W

NET WEIGHT

39,7lb
31,5x47,2x49,2 in
77lb



Certifications:



Fluo ref. FLO4-4

LAMP SHADE
Galvanized painted steel

One color*



CANOPY
Stainless steel
120V: Ø 5,51in

CABLE
Transparent

RECOMMENDED BULBS

120V - 60Hz
E26 LED - Max. 4x12 W

NET WEIGHT

25lb
29,5x31x77 in
29,5x31x28 in

35lb



Certifications:



Transport not included

Fluo ref. FL04-16

LAMPSHADE

Galvanized painted steel

CANOPY

Stainless steel

RECOMMENDED BULBS

120V - 60Hz

 E26 LED - Max. 16x12 W

NET WEIGHT

125,6lb

One color*




CABLE


Transparent



*Height is not adjustable on site

 29,5x31,5x78,7 in

 29,5x31,5x28,3 in

 5,91x5,91x74,8 in

170lb



Certifications:



Transport not included

98,4in



Ø 102in

47,2in

Nevo ref. NE04-6

LAMPSHADE

Painted stainless steel

CANOPY

DIBOND®

RECOMMENDED BULBS

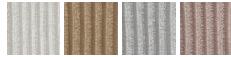
120V - 60Hz

 E12 LED - Max. 12x7 W

NET WEIGHT

20,7lb

One color to choose



Color combinations upon request

CABLE

Transparent

Steel gloss nickel-plated
and Stainless steel

refs. 3xNE06P, 3xNE04-1



23,6x31,5x32,3 in

40lb



Certifications:



45,3in



35,4x35,4in

98,4in

Nevo ref. NE04-11

LAMPSHADE

Painted stainless steel

CANOPY

DIBOND®

RECOMMENDED BULBS

120V - 60Hz

 E12 LED - Max. 22x7 W

NET WEIGHT

22lb

One color to choose



Color combinations upon request

CABLE

Transparent

Steel gloss nickel-plated
and Stainless steel

refs. 4xNE06P, 7xNE04-1



31,5x47,2x53,1 in

116,8lb



Certifications:



55,1in



49,2x49,2in

98,4in



Tati ref. TA04-3

LAMPSHADE
Painted stainless steel

One color to choose



Color combinations upon request

Steel gloss nickel-plated
and Stainless steel

refs. 3xTA06G

CANOPY
DIBOND®
120V: Ø 23,6in

CABLE
Transparent

RECOMMENDED BULBS
120V - 60Hz

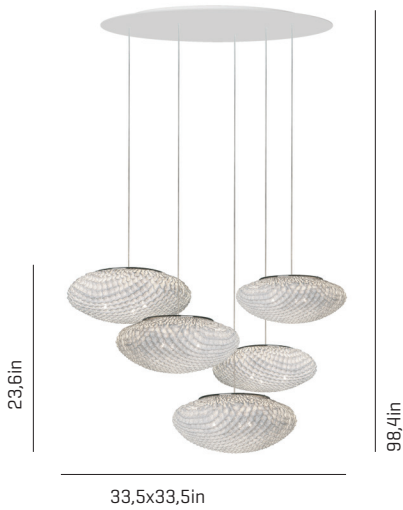
E12 LED - Max. 6x7 W

NET WEIGHT
13,2lb

23,6x31,5x32,3 in
41,9lb



Certifications:



Tati ref. TA04-5

LAMPSHADE
Painted stainless steel

One color to choose



Color combinations upon request

Steel gloss nickel-plated
and Stainless steel

refs. 3xTA06G, 2xTA06P

CANOPY
DIBOND®
120V: Ø 23,6in

CABLE
Transparent

RECOMMENDED BULBS
120V - 60Hz

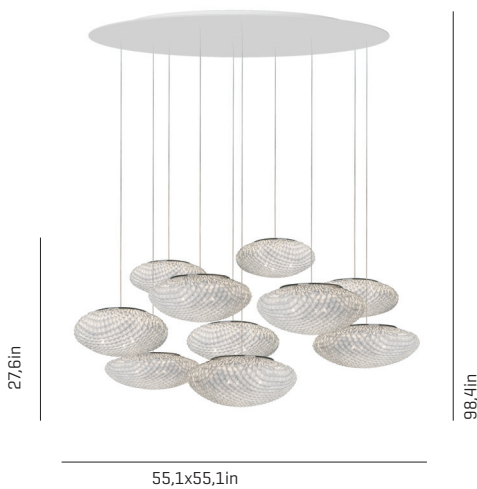
E12 LED - Max. 10x7 W

NET WEIGHT
19,6lb

23,6x31,5x32,3 in
55,1lb



Certifications:



Tati ref. TA04-10

LAMPSHADE
Painted stainless steel

One color to choose



Color combinations upon request

Steel gloss nickel-plated
and Stainless steel

refs. 6xTA06G, 4xTA06P

CANOPY
DIBOND®
120V: Ø 47,2in

CABLE
Transparent

RECOMMENDED BULBS
120V - 60Hz

E12 LED - Max. 20x7 W

NET WEIGHT
41,9lb

31,5x47,2x53,1 in
121,3lb



Certifications:



Tina ref. TN04-5

LAMPSHADE
Polypropylene

CANOPY
DIBOND®
120V: Ø 47,2in

RECOMMENDED BULBS
120V - 60Hz
E26 LED - Max. 5x12 W

NET WEIGHT
39,7lb

One color



CABLE
Transparent

Painted steel



31,5x47,2x53,1 in

83,8lb



Certifications:



refs. 5xTN04

Ura ref. UR04-3

LAMPSHADE
Painted stainless steel

CANOPY
DIBOND®
120V: Ø 23,6in

RECOMMENDED BULBS
120V - 60Hz
E26 LED - Max. 3x12 W

NET WEIGHT
22,5lb

One color to choose



Color combinations upon request

CABLE
Black or transparent



23,6x31,5x37,4 in

22,5lb



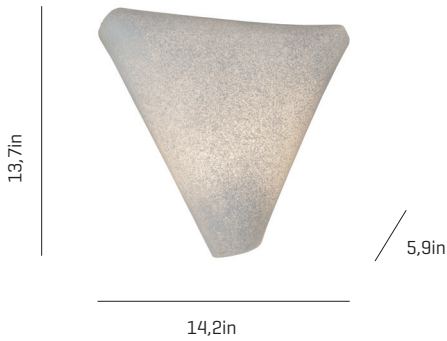
Certifications:



refs. 1xUR104, 1xUR204, 1xUR304



WALL & CEILING LAMPS



Ballet ref. BA06

LAMPSHADE
Painted stainless steel

Support
Painted steel

RECOMMENDED BULBS

NET WEIGHT

120V - 60Hz

1,3lb

E26 LED - Max. 1x12 W

One color to choose

MOUNTING OPTIONS



Wall lamp



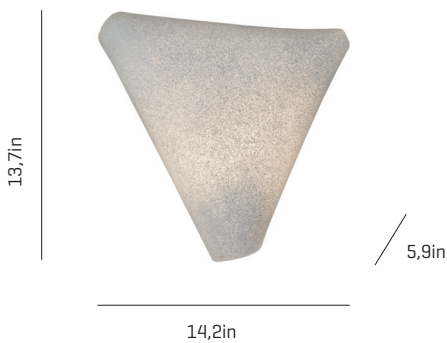
17,3x17,3x7,9 in

4,2lb

Energy efficiency: A+ to E



Certifications:



LED Ballet ref. BA06-LD

LAMPSHADE
Painted stainless steel

Support
Painted steel

LED / DIMMABLE

LIGHT SOURCE BUILT-IN

NET WEIGHT

120V - 60Hz

2,3lb

8W 3000K 1067lm built-in
upon request 2700K 960lm

One color to choose

MOUNTING OPTIONS



Wall lamp



17,3x17,3x7,9 in

4,2lb

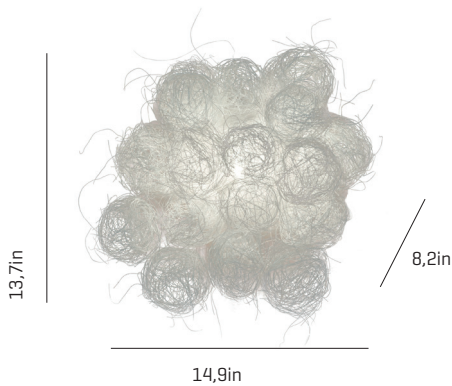
Energy efficiency: A+

Inside diffuser



Certifications:





Blum ref. BLO6

LAMPSHADE
Painted stainless steel thread

Support
Painted steel

RECOMMENDED BULBS

120V - 60Hz

E26 LED - Max. 1x12 W

NET WEIGHT

2,4lb

One color



MOUNTING OPTIONS

Wall lamp



17x17x11,8 in

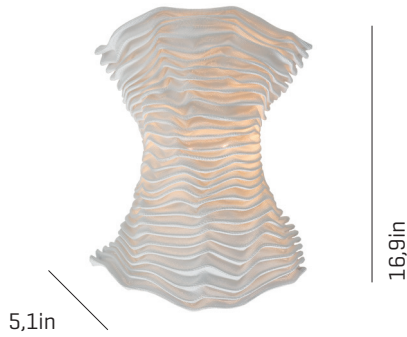
1,5kg | 3,3lb



Certifications:



11,8 in



Cors ref. CRO6

LAMPSHADE
Painted stainless steel

Support
Stainless steel

RECOMMENDED BULBS

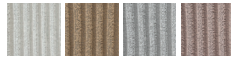
120V - 60Hz

G9 Bi-pin - Max. 2x40 W

NET WEIGHT

1,3lb

One color to choose



MOUNTING OPTIONS

Wall lamp



19,7x7,9x9,8 in

2,2lb



Certifications:



LED

Cors ref. CRO6-LD

LED / DIMMABLE

LAMPSHADE
Painted stainless steel

Support
Steel gloss nickel-plated and Stainless steel

LIGHT SOURCE BUILT-IN

120V - 60Hz

8W 3000K 1067lm built-in
upon request 2700K 960lm

Dimming system PHASE CONTROL

NET WEIGHT

2,4lb

One color to choose



MOUNTING OPTIONS

Wall lamp

Inside diffuser



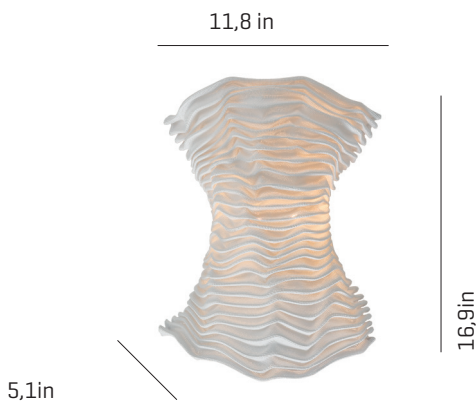
50x20x25 cm

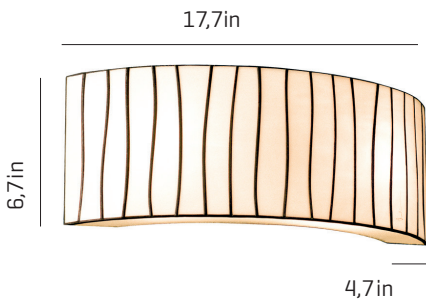
19,7x7,9x9,8 in

1kg | 2,2lb



Certifications:



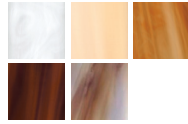


Curvas ref. CV06

LAMPSHADE

Glass
Vidrio

One color to choose



Support

Stainless steel

MOUNTING OPTIONS

Wall lamp

RECOMMENDED BULBS

120V - 60Hz

E12 LED - Max. 2x7 W

NET WEIGHT

3,7lb



24x10,2x8,3 in

6,5lb



Certifications:



Gea ref. GE06

LAMPSHADE

Painted stainless steel

One color to choose



Support

Stainless steel

MOUNTING OPTIONS

Wall lamp

RECOMMENDED BULBS

120V - 60Hz

G9 Bi-pin - Max. 2x40 W

NET WEIGHT

1,3lb

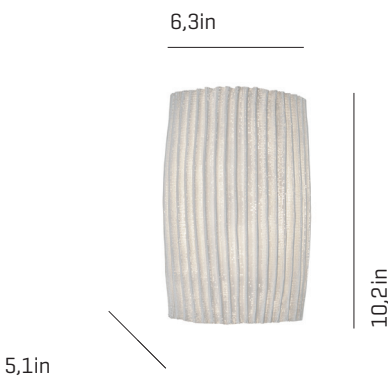


13,4x9,4x5,9 in

2,2lb



Certifications:



Gea ref. GE06-LD

LAMPSHADE

Painted stainless steel

One color to choose



Support

Steel gloss nickel-plated
and Stainless steel

MOUNTING OPTIONS

Wall lamp

Inside diffuser

LED / DIMMABLE

LIGHT SOURCE BUILT-IN

120V - 60Hz

8W 3000K 1067lm built-in
upon request 2700K 960lm
Dimming system PHASE CONTROL

NET WEIGHT

2,4lb



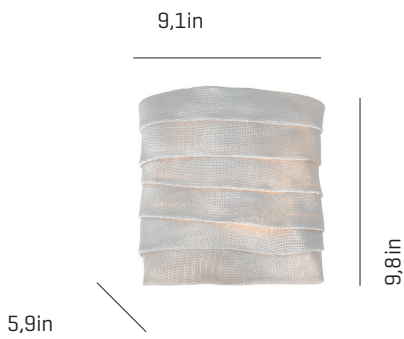
13,4x9,4x5,9 in

2,2lb



Certifications:





Kala_{ref.} KL06

LAMPSHADE
Painted stainless steel

Support
Stainless steel

RECOMMENDED BULBS

NET WEIGHT

120V - 60Hz

1,3lb

G9 Bi-pin - Max. 2x40 W

One color to choose

MOUNTING OPTIONS

Wall lamp

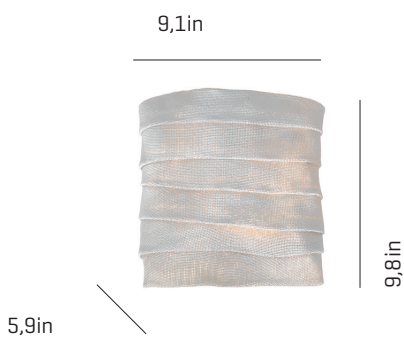


13,4x9,4x5,9 in

2,2lb



Certifications:



LED

Kala_{ref.} KL06-LD

LAMPSHADE
Painted stainless steel

Support
Steel gloss nickel-plated
and Stainless steel

LED / DIMMABLE

LIGHT SOURCE BUILT-IN

NET WEIGHT

120V - 60Hz

2,4lb

8W 3000K 1067lm built-in
upon request 2700K 960lm
Dimming system PHASE CONTROL

One color to choose

MOUNTING OPTIONS

Wall lamp



Inside diffuser

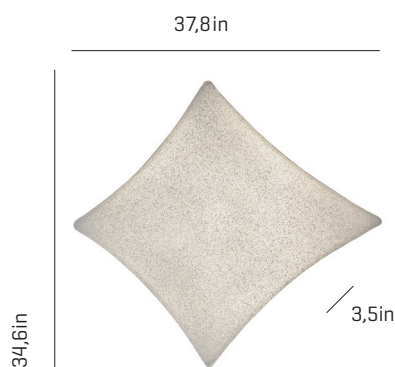


13,4x9,4x5,9 in

2,2lb



Certifications:



Kite_{ref.} KT06

LAMPSHADE
SIMETECH®
by arturo alvarez

Support
Stainless steel

RECOMMENDED BULBS

NET WEIGHT

120V - 60Hz

9,7lb

2GX13 - Max. 1x55 W

One color

MOUNTING OPTIONS

Wall lamp & ceiling lamp



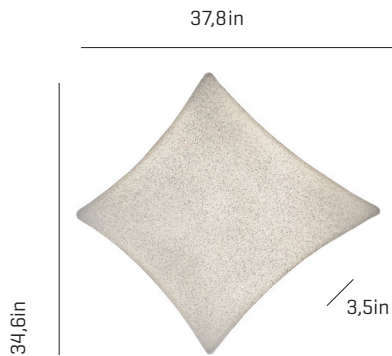
28x28x5,9 in

13,2lb



Certifications:





Kite ref. KT06-LD

LAMPSHADE
SIMETECH®
by arturo alvarez

One color



Support
Stainless steel

MOUNTING OPTIONS
Wall & ceiling lamp

LED / DIMMABLE

LIGHT SOURCE BUILT-IN

120V - 60Hz

□□□□ 24W 3000K 3780lm built-in
upon request 2700K 3636lm

Dimming system 0-10 V
upon request PHASE CONTROL

NET WEIGHT
18,7lb

28x28x5,9 in

20,3lb



Certifications:



Kite ref. KT06G

LAMPSHADE
SIMETECH®
by arturo alvarez

One color



Support
Stainless steel

MOUNTING OPTIONS
Wall & ceiling lamp

RECOMMENDED BULBS

120V - 60Hz

⇔ T5 HO Bi-pin - 4x24 W

NET WEIGHT
15,9lb

40,1x40,1x5,1 in

22lb



Certifications:



Kite ref. KT06G-LD

LAMPSHADE
SIMETECH®
by arturo alvarez

One color



Support
Stainless steel

MOUNTING OPTIONS
Wall & ceiling lamp

LED / DIMMABLE

LIGHT SOURCE BUILT-IN

120V - 60Hz

□□□□ 48W 3000K 7560lm built-in
upon request 2700K 7272lm

Dimming system 0-10 V
upon request PHASE CONTROL

NET WEIGHT
16,5lb

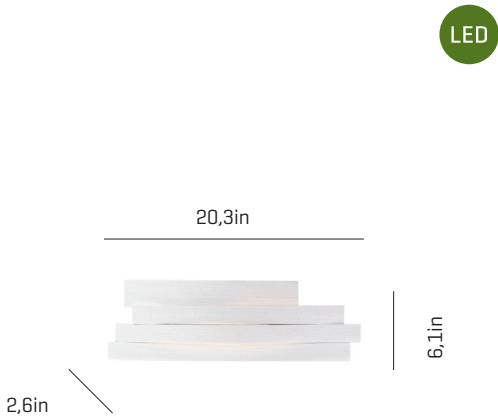
40,1x40,1x5,1 in

24,2lb



Certifications:





Li ref. L106

LAMPSHADE
Pressed Cellulose

One color to choose



Support
Stainless steel

MOUNTING OPTIONS
Wall lamp

LED / DIMMABLE

LIGHT SOURCE BUILT-IN

120V - 60Hz

□□□□ 11,8W 3000K 1805lm built-in
upon request 2700K

Dimming system PHASE CONTROL

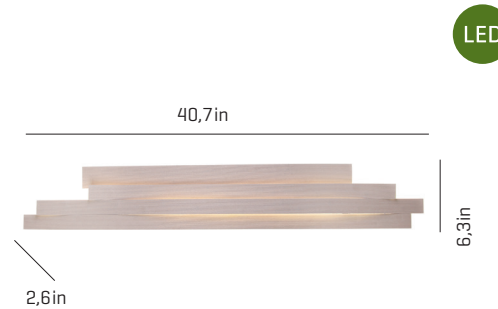
NET WEIGHT
2,6lb

☐
27,6x8,3x4,7 in

4,4lb



Certifications:



Li ref. L106G-D

LAMPSHADE
Pressed Cellulose

One color to choose



Support
Stainless steel

MOUNTING OPTIONS
Wall lamp

LED / DIMMABLE

LIGHT SOURCE BUILT-IN

120V - 60Hz

□□□□ 23,6W 3000K 2768lm built-in
upon request 2700K

Dimming system 0-10V

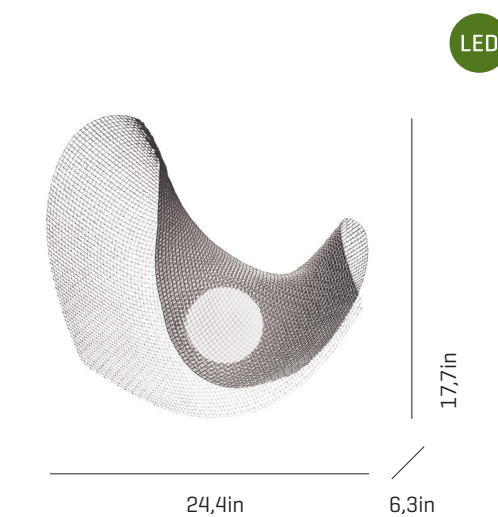
NET WEIGHT
6,4lb

☐
43,3x12,2x9,8 in

10,4lb



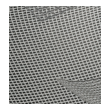
Certifications:



Mytilus ref. MY06

LAMPSHADE
Painted stainless steel

White color



DIFFUSER
Glass sphere

Support
Steel gloss nickel-plated

MOUNTING OPTIONS
Wall

LED / DIMMABLE

LIGHT SOURCE BUILT-IN

120V - 60Hz

☼ 8W 3000K 1067lm built-in
upon request 2700K 960lm

Dimming system PHASE CONTROL

NET WEIGHT
6,6lb

☐
23,6x23,6x8,7 in

9,9lb



Certifications:



*approximate measurements



Nevo_{ref.} NE06P

LAMPSHADE

Painted stainless steel

Support

Steel gloss nickel-plated and Stainless steel

RECOMMENDED BULBS

120V - 60Hz

G9 Bi-pin - Max. 1x40 W

NET WEIGHT

1,8lb

One color to choose



MOUNTING OPTIONS

Wall & ceiling lamp

Steel gloss nickel-plated and Stainless steel



14,2x14,2x12,2 in

4lb



Certifications:



Nevo_{ref.} NE06P-LD

LED / DIMMABLE

LAMPSHADE

Painted stainless steel

Support

Steel gloss nickel-plated and Stainless steel

LIGHT SOURCE BUILT-IN

120V - 60Hz

8W 3000K 1067lm built-in
upon request 2700K 960lm
Dimming system PHASE CONTROL

NET WEIGHT

2,6lb

One color to choose



MOUNTING OPTIONS

Wall lamp

Steel gloss nickel-plated and Stainless steel



14,2x14,2x12,2 in

1,8kg | 4lb



Certifications:



Nevo_{ref.} NE06

LAMPSHADE

Painted stainless steel

Support

Steel gloss nickel-plated and Stainless steel

RECOMMENDED BULBS

120V - 60Hz

E12 LED - Max. 2x7 W

NET WEIGHT

2,4lb

One color to choose



MOUNTING OPTIONS

Wall & ceiling lamp

Steel gloss nickel-plated and Stainless steel



14,2x14,2x12,2 in

4,8lb



Certifications:





Nevo_{ref.} NE06-LD

LED / DIMMABLE

LAMPSHADE

Painted stainless steel

Support

Steel gloss nickel-plated and Stainless steel

LIGHT SOURCE BUILT-IN

120V - 60Hz

8W 3000K 1067lm built-in
upon request 2700K 960lm
Dimming system PHASE CONTROL

NET WEIGHT

3,1lb

One color to choose



MOUNTING OPTIONS

Wall lamp

Steel gloss nickel-plated and Stainless steel

Inside diffuser

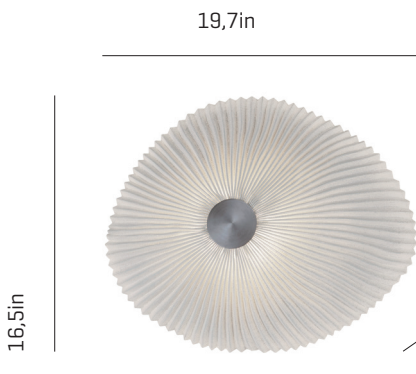


14,2x14,2x12,2 in

4,8lb



Certifications:



Onn_{ref.} ON06

RECOMMENDED BULBS

120V - 60Hz

E26 LED - Max. 1x12 W

NET WEIGHT

6,6lb

LAMPSHADE

Painted stainless steel

SUPPORT

Painted steel

One color



MOUNTING OPTIONS

Wall & ceiling lamp

Energy efficiency: A+ to E

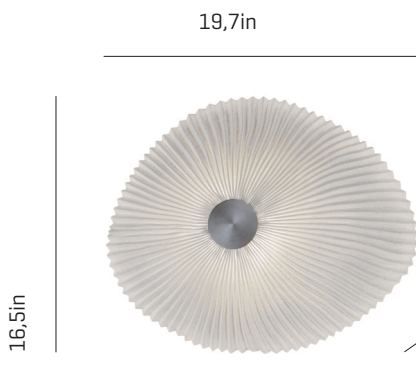


20,5x18,5x12,2 in

9,7lb



Certifications:



Onn_{ref.} ON06-LD

LED / DIMMABLE

LAMPSHADE

Painted stainless steel

SUPPORT

Painted steel

LIGHT SOURCE BUILT-IN

120V - 60Hz

24W 3000K 2945lm built-in
upon request 2700K 2860lm

NET WEIGHT

7,7lb

One color



MOUNTING OPTIONS

Wall & ceiling lamp

Inside diffuser



20,5x18,5x12,2 in

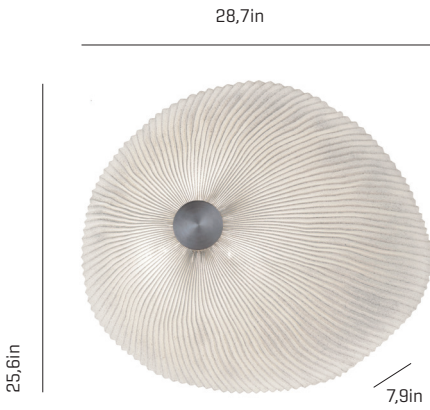
9,7lb



Certifications:



Onn ref. ON06G



LAMPSHADE
Painted stainless steel

SUPPORT
Painted steel

RECOMMENDED BULBS

NET WEIGHT

120V - 60Hz

15,4lb

 E26 LED - Max. 3x12 W

One color

MOUNTING OPTIONS

Wall & ceiling lamp



28x28x12,6 in

13,4lb

Energy efficiency: A+ to E



Certifications:



Planum ref. PM06R



37,8x37,8in

LAMPSHADE
SIMETECH®
by arturo alvarez

Support
Stainless steel

RECOMMENDED BULBS

NET WEIGHT

120V - 60Hz

14,1lb

 T5 HO Bi-pin - 4x24 W

One color

MOUNTING OPTIONS

Wall & ceiling lamp



40,1x40,1x5,1 in

19,8lb

Energy efficiency: A+ to B



Certifications:



LED Planum ref. PM06R-LD



37,8x37,8in

LAMPSHADE
SIMETECH®
by arturo alvarez

Support
Stainless steel

LED / DIMMABLE

NET WEIGHT

120V - 60Hz

14,6lb

 48W 3000K 7560lm built-in

upon request 2700K 7272lm

Dimming system 0-10 V
upon request PHASE CONTROL

One color

MOUNTING OPTIONS

Wall & ceiling lamp



40,1x40,1x5,1 in

22lb

Energy efficiency: A+ to B



Certifications:





Planum ref. PM06PR

LAMPSHADE
SIMETECH®
by arturo alvarez

One color




Support
Stainless steel

MOUNTING OPTIONS
Wall & ceiling lamp

RECOMMENDED BULBS

120V - 60Hz
T5 HO Bi-pin - 2x24 W

NET WEIGHT
6lb


39,4x20,9x5,1 in
9,9lb



Certifications:
 



LED Planum ref. PM06PR-LD

LAMPSHADE
SIMETECH®
by arturo alvarez

One color




Support
Stainless steel

MOUNTING OPTIONS
Wall & ceiling lamp

LED / DIMMABLE

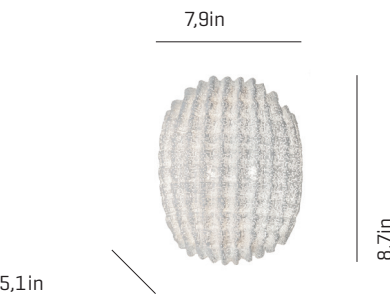
LIGHT SOURCE BUILT-IN
120V - 60Hz
24W 3000K 3780lm built-in
upon request 2700K 3636lm
Dimming system 0-10 V
upon request PHASE CONTROL

NET WEIGHT
6,2lb


39,4x20,9x5,1 in
11lb



Certifications:
 



Tati ref. TA06

LAMPSHADE
Painted stainless steel

One color to choose



Steel gloss nickel-plated
and Stainless steel


Support
Stainless steel

MOUNTING OPTIONS
Wall lamp

RECOMMENDED BULBS

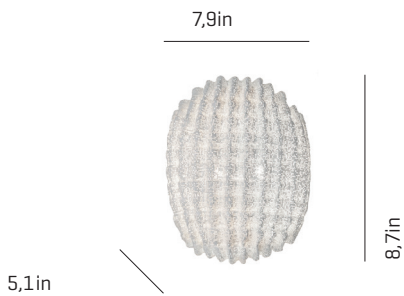
120V - 60Hz
G9 Bi-pin - Max. 2x40 W

NET WEIGHT
1,1lb


13,4x9,4x5,9 in
2,2lb



Certifications:

Tati_{ref.} TA06-LD

LED / DIMMABLE

LAMPSHADE

Painted stainless steel

Support

Steel gloss nickel-plated and Stainless steel

LIGHT SOURCE BUILT-IN

120V - 60Hz

8W 3000K 1067lm built-in

upon request 2700K 960lm

Dimming system PHASE CONTROL

NET WEIGHT

1,5lb

One color to choose



MOUNTING OPTIONS

Wall lamp

Steel gloss nickel-plated and Stainless steel

120V - 60Hz

8W 3000K 1067lm built-in

upon request 2700K 960lm

Dimming system PHASE CONTROL



13,4x9,4x5,9 in

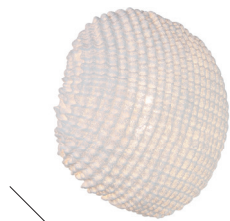
2,2lb



Certifications:



6,7in



11,8in

11,8in

Tati_{ref.} TA06P

LAMPSHADE

Painted stainless steel

Support

Steel gloss nickel-plated and Stainless steel

RECOMMENDED BULBS

120V - 60Hz

G9 Bi-pin - Max. 1x40 W

NET WEIGHT

1,8lb

One color to choose



MOUNTING OPTIONS

Wall & ceiling lamp

Steel gloss nickel-plated and Stainless steel



14,2x14,2x12,2 in

2,2lb



Certifications:



Tati_{ref.} TA06P-LD

LED / DIMMABLE

LAMPSHADE

Painted stainless steel

Support

Steel gloss nickel-plated and Stainless steel

LIGHT SOURCE BUILT-IN

120V - 60Hz

8W 3000K 1067lm built-in

upon request 2700K 960lm

Dimming system PHASE CONTROL

NET WEIGHT

2,6lb

One color to choose



MOUNTING OPTIONS

Wall lamp

Steel gloss nickel-plated and Stainless steel

120V - 60Hz

8W 3000K 1067lm built-in

upon request 2700K 960lm

Dimming system PHASE CONTROL



14,2x14,2x12,2 in

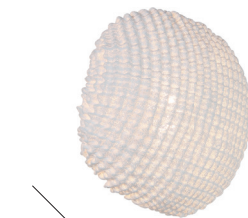
2,2lb



Certifications:



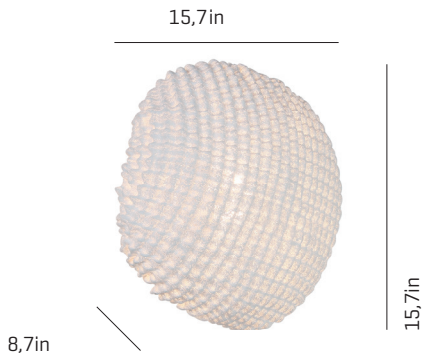
6,7in



11,8in

11,8in

Tati^{ref.} TA06G



LAMPSHADE

Painted stainless steel

One color to choose



Steel gloss nickel-plated and Stainless steel

Support

Steel gloss nickel-plated and Stainless steel

MOUNTING OPTIONS

Wall & ceiling lamp

RECOMMENDED BULBS

120V - 60Hz

E12 LED - Max. 2x7 W

NET WEIGHT

2,2lb



20,5x18,5x12,2 in

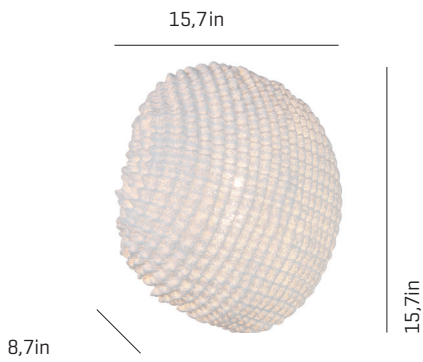
5,3lb



Certifications:



Tati^{ref.} TA06G-LD



LAMPSHADE

Painted stainless steel

One color to choose



Steel gloss nickel-plated and Stainless steel

Support

Steel gloss nickel-plated and Stainless steel

MOUNTING OPTIONS

Wall lamp

LED / DIMMABLE

LIGHT SOURCE BUILT-IN

120V - 60Hz

8W 3000K 1067lm built-in
upon request 2700K 960lm

Dimming system PHASE CONTROL

NET WEIGHT

3,1lb



20,5x18,5x12,2 in

5,3lb



Certifications:





NOTE:

Most of our pendant lamps [single and chandeliers] could be installed using a piece to move the electric cable.
For chandeliers, please ask for quotation.

Headquarters:

Calor Color S.L.
C/ Castiñeiras 108A.
15895 O Milladoiro, A Coruña, Spain.
T. +34 981 814 600
F. +34 981 502 000
info@arturo-alvarez.com

USA Branch:

arturo alvarez inc.
sales@arturo-alvarez.com

Artwork Arturo Álvarez:

San Miguel de Sarandón, 9.
15885 Vedra, A Coruña, Spain.

©2019 Calor Color S.L.
All rights reserved.

Legal deposit: C 543-2019
Development, production and design: arturo alvarez.
Printed by Agencia Gráfica. Santiago de Compostela. Spain.

