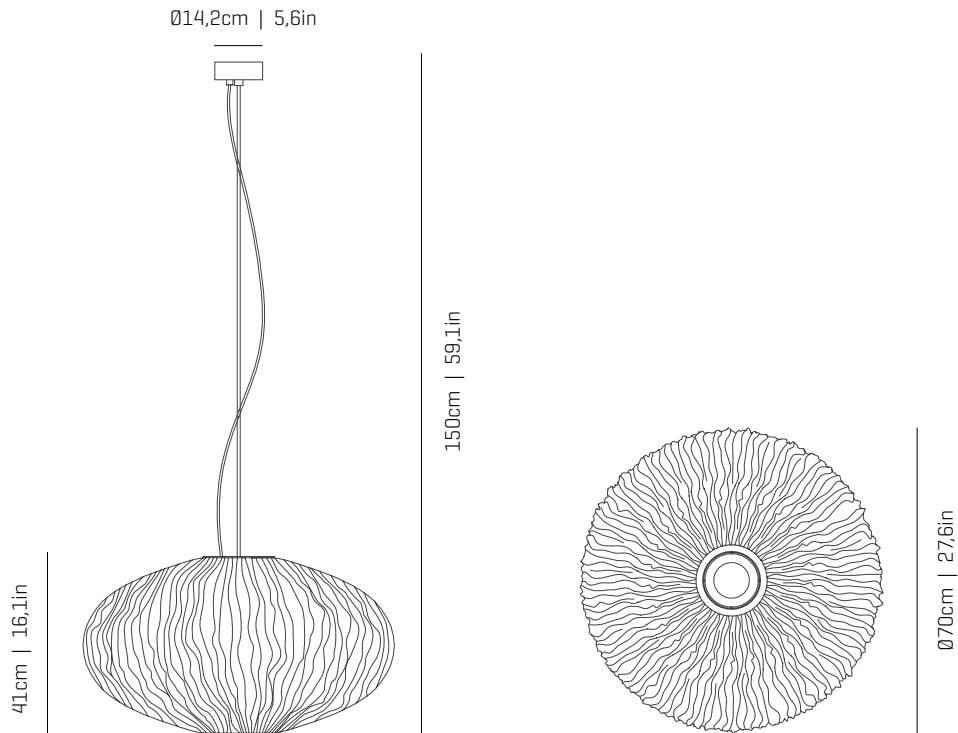


a

emotional light

coral collection

LED



ref. COAU04G-LD



MATERIALS & COMPONENTS | MATERIALES & COMPONENTES

LAMP SHADE | TULIPA

Painted stainless steel | One color to choose
Acero inoxidable pintado | Un color a elegir



BL BE G T

CUSTOM
COLOR

Stainless steel | Acero inoxidable

Bottom diffuser | Difusor inferior

CANOPY AND CABLE | FLORÓN Y CABLE

Steel gloss nickel-plated
Acero níquel-satinado

Transparent or black cable

Cable transparente o negro

Standard: 150cm | 59,1in

Length/largo customizable

120V: 200cm | 78,7in

LIGHT SOURCE BUILT IN

FUENTE DE LUZ INCLUIDA

230V - 50Hz

35W 2700K 3938lm built-in
upon request 3000K 4086lm

Dimming system: DALI / Switch DIM

upon request PHASE CUT

100~277V - 60Hz

35W 2700K 3938lm built-in
upon request 3000K 4086lm

Dimming system: 0-10V

ENERGY EFFICIENCY

EFICIENCIA ENERGÉTICA

This product contains a light source of energy efficiency class D

Este producto contiene una fuente luminosa de la clase de eficiencia energética D

OTHER DATA | OTROS DATOS

NET WEIGHT | PESO NETO

4,5kg | 9,9lb

PACKAGING | EMBALAJE

71x71x42cm | 28x 28x 16,5in

8kg | 17,6lb

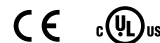
ELECTRICAL FEATURES

CARACTERÍSTICAS ELÉCTRICAS



CERTIFICATIONS

CERTIFICACIONES



Coral Seaurchin

ref. COAU04G-LD

Suitable for indoor use, at 25°C

Apta para uso interior a temperatura ambiente de 25°C

Box contains | Contenido de la caja:

A - Lampshade | Tulipa [1]

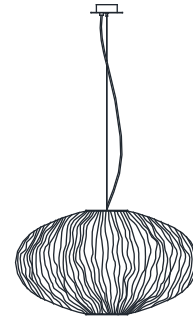
B - Holding piece | Pieza de sujeción [1]

C - Security screws | Tornillos de seguridad [2]

D - Wall Plugs | Tacos [2]

E - Canopy | Florón [1]

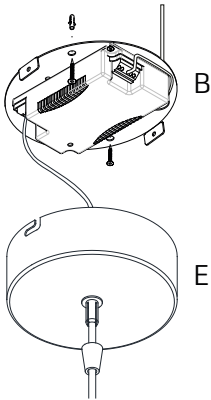
F - Screws | Tornillos [2]



LED

SAFETY NOTE: Switch off mains supply before commencing installation

INDICACIÓN DE SEGURIDAD: Desconecte la alimentación eléctrica antes de empezar con la instalación



1.1

See the circuit diagram
on the back of this sheet

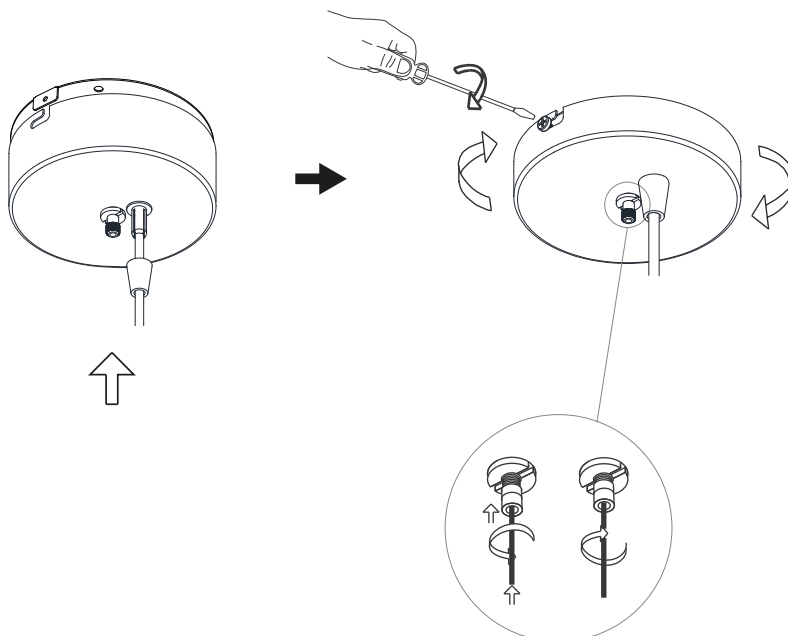
Ver diagrama de circuito en el
reverso del folio

1.2

1

1.1 Drill the holes in the ceiling, fit the wall plugs into them and screw the holding piece.
1.2 Do the electric connection, please follow the instructions.

1.1 Realizar los agujeros en el techo, colocar los tacos y atornillar la pieza de sujeción.
1.2 Hacer la conexión eléctrica siguiendo las instrucciones.



2

Insert the canopy in the holding piece and tight the security screws.

Loosen the security nut and introduce the steel wire through it. Tighten the security nut.

Encajar el florón en la pieza de sujeción y apretar los tornillos de seguridad.

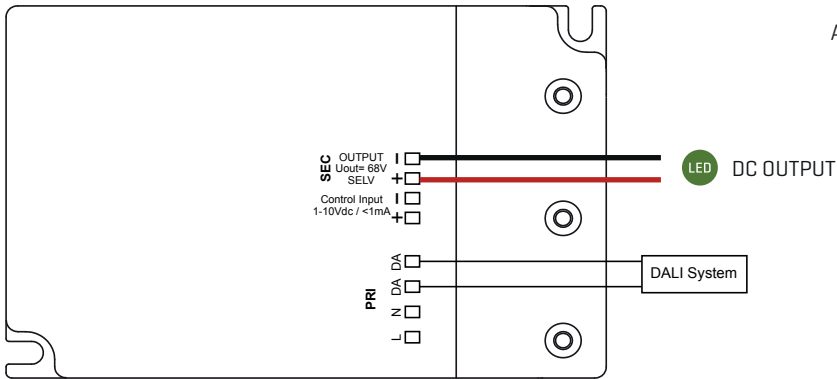
Aflojar la tuerca de seguridad e introducir el cable de acero. Apretar la tuerca de seguridad.

Unscrew the cover to access the regulation terminals.

If you are not going to regulate the luminaire, it is not necessary, connect the LED to the orange tabs respecting the color code.

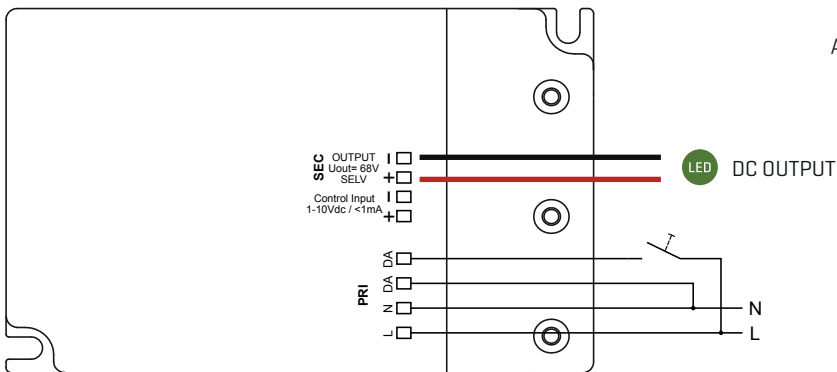
Desatornille la tapa para acceder a los bornes de regulación.

Si no va a regular la luminaria, no es necesario, conecte el LED en las fichas naranjas respetando el código de colores.



Attention! The DIP switch is factory set and the 1-10V control input is active. Don't modify it.

Circuit diagram **DALI-2**

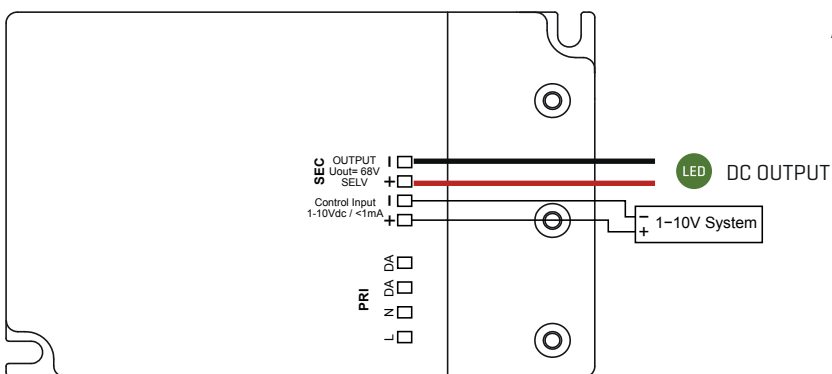


Attention! The DIP switch is factory set and the 1-10V control input is active. Don't modify it.

Circuit diagram **TOUCH-DIM**



Short push (< 0.6 sec) Push to turn ON-OFF
Long push (> 0.6 sec) Dimming up or down



Attention! The DIP switch is factory set and the 1-10V control input is active. Don't modify it.

Circuit diagram **1-10V**



According to the directive on electrical and electronic devices, don't dispose with the regular household waste., there are at local collection points for such devices.
De acuerdo con la directiva sobre residuos de aparatos eléctricos y electrónicos, no tire el producto a la basura doméstica, llévelo a los puntos de recogida selectiva.