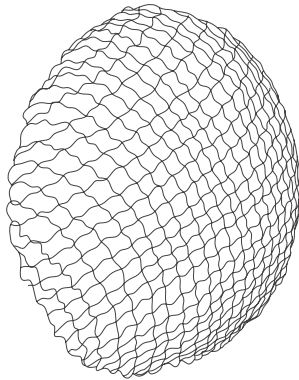


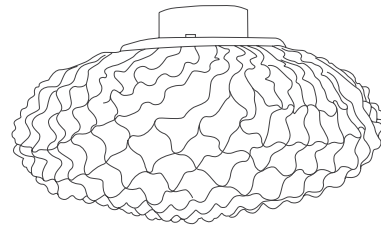
a

emotional light

tati collection



38cm | 15in



22cm | 8,7in

38cm | 15in

ref. TA06G



MATERIALS & COMPONENTS | MATERIALES & COMPONENTES

LAMP SHADE | TULIPA

Painted stainless steel | One color to choose
Acero inoxidable pintado | Un color a elegir



BL

BE

G

T

CUSTOM
COLOR

Steel gloss nickel-plated and stainless steel
Acero níquel-satinado y acero inoxidable

SUPPORT AND MOUNTING OPTIONS

SOPORTE Y OPCIONES DE INSTALACIÓN

Steel gloss nickel-plated and stainless steel
Acero níquel-satinado y acero inoxidable


Wall lamp
Aplicque

RECOMMENDED BULBS

BOMBILLAS RECOMENDADAS

230V - 50Hz

 E14 LED Vintage - Max. 2x7 W

 E14 LED Standard - Max. 2x7 W

120V - 60Hz

 E12 LED - Max. 2x7 W

ENERGY EFFICIENCY

EFICIENCIA ENERGÉTICA

from A++ to E
desde A++ a E

OTHER DATA | OTROS DATOS

NET WEIGHT | PESO NETO

1kg | 2,2lb

PACKAGING | EMBALAJE

52x47x31cm | 20,5x 18,5x 12,2in
2,4kg | 5,3lb

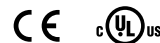
ELECTRICAL FEATURES

CARACTERÍSTICAS ELÉCTRICAS



CERTIFICATIONS

CERTIFICACIONES



emotional light

Tati

ref. TA06G

Suitable for indoor use, at 25°C

Apta para uso interior a temperatura ambiente de 25°C

Box contains | Contenido de la caja:

A - Lampshade | Tulipa [1]

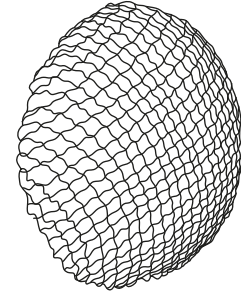
B - Holding piece | Pieza de sujeción [1]

C - Security screws | Tornillos de seguridad [2]

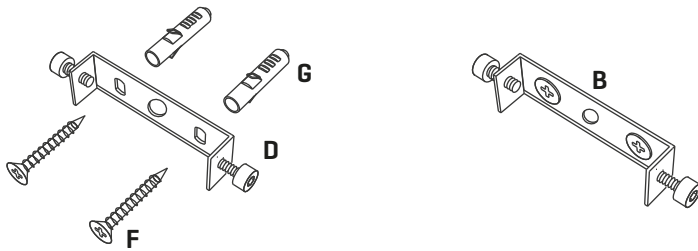
E - Electrical disposal | Ficha [1]

F - Screws | Tornillos [2]

G - Wall Plugs | Tacos [2]



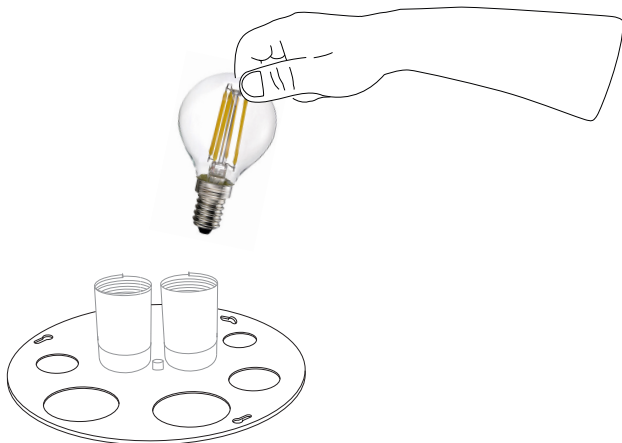
Recommended bulbs : E14 LED Vintage - Max. 2x7 W | E14 LED Standard - Max. 2x7W
Bombillas recomendadas : E14 LED Vintage - Max 2x7 W | E14 LED Standard - Max 2x7 W



1

Drill the holes in the wall, fit the wall plugs into them and screw the holding piece.

Realizar los agujeros en la pared, colocar los tacos y atornillar la pieza de sujeción.



2

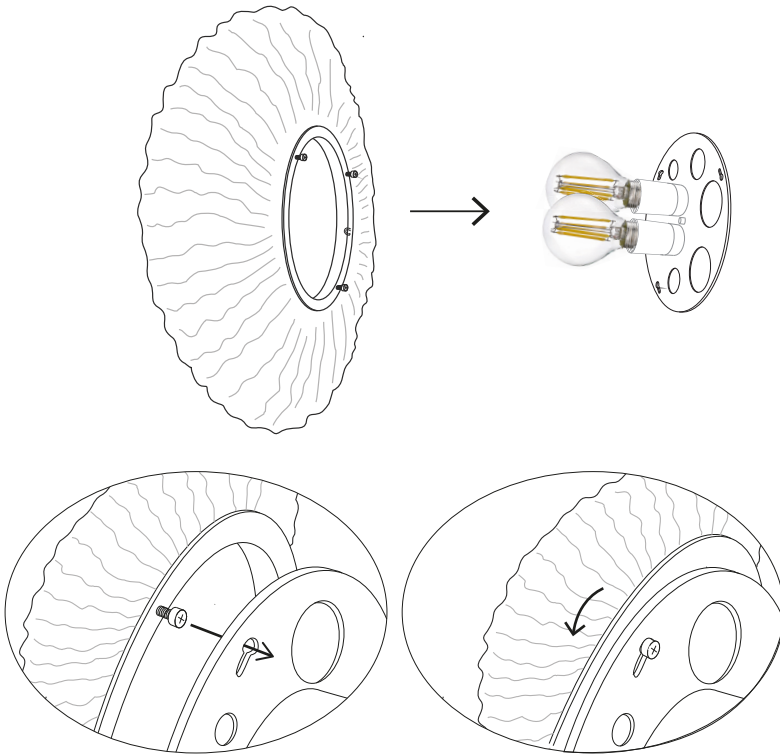
Screw the two bulbs [not included] into their socket.

IMPORTANT !: Due to dimensions, the candle bulb format is not valid for this luminaire.

Enrosca las dos bombillas [no incluidas] en sus portalámparas.

¡**IMPORTANTE!**! Por dimensiones el formato de bombilla de vela no es válida para esta luminaria.





3

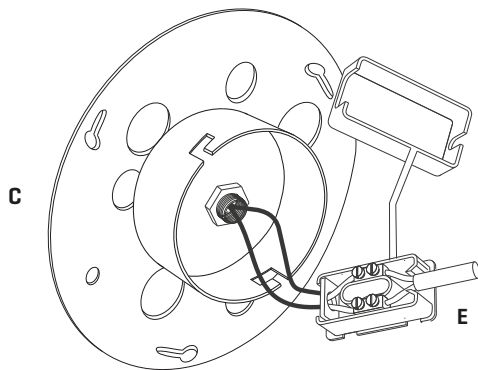
Fit the lampshade attachment screws in the bracket's keyholes. Rotate the lampshade until they stop. Tighten the set screws to secure the assembly.

Encajar los tornillos de enganche de la tulipa en las bocallaves del soporte. Gire la tulipa hasta que hagan tope. Apriete los tornillos de enganche para asegurar el conjunto.



The device is not suitable for installation on normally inflammable surfaces.

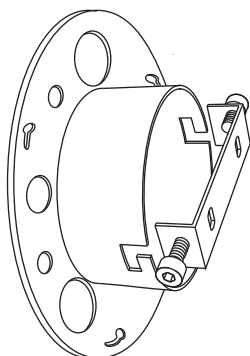
Aparato no adaptado para la instalación en superficies normalmente inflamables.



4

Pass the electric cables inside the metal support through the black protection tube, make the electrical connection in the box [E] and close it.

Passar los cables eléctricos al interior del soporte metálico por el tubo negro de protección, hacer la conexión eléctrica en la ficha [E] y cerrarla.



5

Insert the canopy in the holding piece and tight the security screws.

Encajar el florón en la pieza de sujeción y apretar los tornillos de seguridad.